

Phospho-Rb (S780) Rabbit monoclonal antibody

Catalog: BS41505

Host: Rabbit

Reactivity: Human Mouse

BackGround:

Key regulator of entry into cell division that acts as a tumor suppressor. Promotes G0-G1 transition when phosphorylated by CDK3/cyclin-C. Acts as a transcription repressor of E2F1 target genes.

Product:

Rabbit IgG, 1mg/ml in PBS with 0.02% sodium azide, 50% glycerol, pH7.2.

Molecular Weight:

106kDa

Swiss-Prot:

P06400

Purification&Purity:

Affinity-chromatography

Applications:

WB 1:500~1:2000

Storage&Stability:

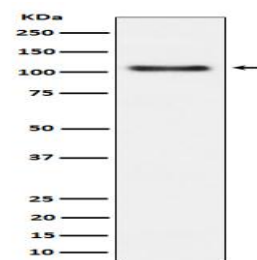
Store at 4 °C short term. Aliquot and store at -20 °C long

term. Avoid freeze-thaw cycles.

Specificity:

Phospho-Rb (S780) Antibody detects endogenous levels of total Phospho-Rb (S780)

DATA:



Western blot analysis of Phospho-Rb (S780) expression in K562 cell lysate.

Note:

For research use only, not for use in diagnostic procedure.

Bioworld Technology, Inc.

Add: 1660 South Highway 100, Suite 500 St. Louis Park, MN 55416, USA.

Email: info@bioworld.com

Tel: 6123263284

Fax: 6122933841

Bioworld technology, co. Ltd.

Add: No 9, weidi road Qixia District Nanjing, 210046, P. R. China.

Email: info@biogot.com

Tel: 0086-025-68037686

Fax: 0086-025-68035151