

GSK3α (phospho-S21) polyclonal antibody

Catalog: BS4082

Host: Rabbit

Reactivity: Human, Mouse, Rat

BackGround:

Glycogen synthase kinase-3 α and β (GSK-3 α , β) are serine/threonine kinases that regulate metabolic enzymes and transcription factors, which are responsible for coordinating processes such as glycogen synthesis and cell adhesion. GSK-3 β activity is also required for nuclear activity of Rel dimers, which mediate an anti-apoptotic response to TNF α in mice. GSK-3 catalytic kinase activity is controlled through differential phosphorylation of serine/threonine residues, which have an inhibitory effect, and tyrosine residues, which have an activating effect. Growth factor stimulation of mammalian cells expressing GSK-3 α and GSK-3 β induces phosphorylation of Ser 21 and Ser 9, respectively through a phosphatidylinositol 3-kinase (PI 3-kinase)-protein kinase B (PKB) dependent pathway, thereby enhancing proliferative signals. Additionally, GSK-3 physically associates with cAMP-dependent protein kinase A (PKA), which phosphorylates Ser 21 of GSK-3 α or Ser 9 of GSK-3 β and inactivates both forms

Product:

1 mg/ml in Phosphate buffered saline (PBS) with 0.05% sodium azide, approx. pH 7.2.

Molecular Weight:

~ 51 kDa

Swiss-Prot:

P49840

Purification&Purity:

The antibody was affinity-purified from rabbit antiserum by affinity-chromatography using epitope-specific immunogen and the purity is > 95% (by SDS-PAGE).

Applications:

WB: 1:500~1:1000

IHC: 1:50~1:200

IP: 1:50~1:200

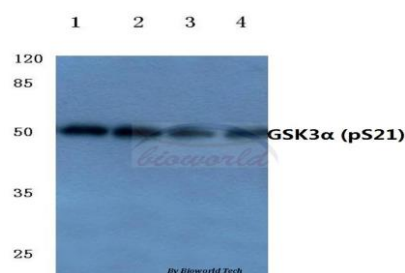
Storage&Stability:

Store at 4 °C short term. Aliquot and store at -20 °C long term. Avoid freeze-thaw cycles.

Specificity:

p-GSK3 α (S21) polyclonal antibody detects endogenous levels of GSK3 α protein only when phosphorylated at Ser21 .

DATA:



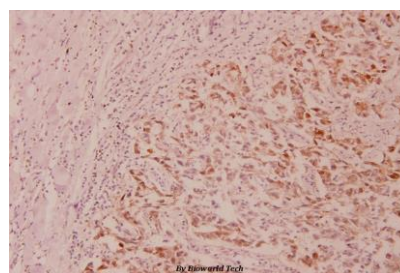
Western blot (WB) analysis of p-GSK3 α (S21) polyclonal antibody at 1:500 dilution

Lane1:HEK293T cell lysate treated with UV

Lane2:Mouse liver tissue lysate

Lane3:Rat liver tissue lysate

Lane4:PC12 cell lysate treated with H2O2



Immunohistochemistry (IHC) analyzes of p-GSK3 α (S21) pAb in paraffin-embedded human breast carcinoma tissue at 1:100.

Note:

For research use only, not for use in diagnostic procedure.

Bioworld Technology, Inc.

Add: 1660 South Highway 100, Suite 500 St. Louis Park, MN 55416, USA.

Email: info@bioworld.com

Tel: 6123263284

Fax: 6122933841

Bioworld technology, co. Ltd.

Add: No 9, weidi road Qixia District Nanjing, 210046, P. R. China.

Email: info@biogot.com

Tel: 0086-025-68037686

Fax: 0086-025-68035151



PRODUCT DATA SHEET

Bioworld Technology, Inc.

Bioworld Technology, Inc.

Add: 1660 South Highway 100, Suite 500 St. Louis Park,
MN 55416, USA.

Email: info@bioworld.com

Tel: 6123263284

Fax: 6122933841

Bioworld technology, co. Ltd.

Add: No 9, weidi road Qixia District Nanjing, 210046,
P. R. China.

Email: info@biogot.com

Tel: 0086-025-68037686

Fax: 0086-025-68035151