

## Filamin 1 (phospho-S2152) polyclonal antibody

Catalog: BS4075

Host: Rabbit

Reactivity: Human, Mouse, Rat

### BackGround:

Caldesmon, Filamin 1, nebulin and villin are differentially expressed and regulated Actin binding proteins. Both muscular (CDh) and non-muscular (CDI) forms of caldesmon have been identified and each has been shown to bind to Actin as well as to calmodulin and Myosin. CDh is expressed predominantly on thin filaments in smooth muscle, whereas CDI is widely expressed in nonmuscle tissues and cells. Filamin 1, which is ubiquitously expressed and exists as a homodimer, functions to crosslink Actin to filaments. Nebulin is a large filamentous protein specific to muscle tissue that may function as a ruler for filament length. Several isoforms of nebulin, ranging from 700 to 900 kDa, are produced by alternative exon usage. Villin is  $Ca^{2+}$ -regulated and is the major structural component of the brush border of absorptive cells.

### Product:

1 mg/ml in Phosphate buffered saline (PBS) with 0.05% sodium azide, approx. pH 7.2.

### Molecular Weight:

~ 280 kDa

### Swiss-Prot:

P21333

### Purification&Purity:

The antibody was affinity-purified from rabbit antiserum by affinity-chromatography using epitope-specific immunogen and the purity is > 95% (by SDS-PAGE).

### Applications:

WB: 1:500~1:1000

IHC: 1:50~1:200

### Storage&Stability:

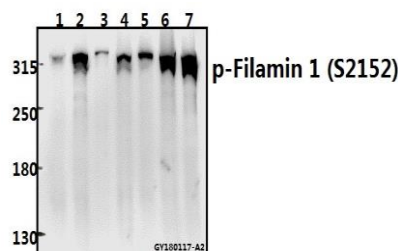
Store at 4 °C short term. Aliquot and store at -20 °C long term. Avoid freeze-thaw cycles.

### Specificity:

p-Filamin 1 (S2152) polyclonal antibody detects endog-

enous levels of Filamin 1 protein when phosphorylated at Ser2152.

### DATA:



Western blot (WB) analysis of Filamin 1 (phospho-S2152) polyclonal antibody at 1:500 dilution

Lane1:Hela whole cell lysate(40ug)

Lane2:A549 whole cell lysate(20ug)

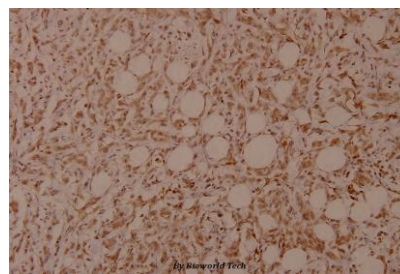
Lane3:The Lung tissue lysate of Rat(20ug)

Lane4:AML-12 whole cell lysate(40ug)

Lane5:CT26 whole cell lysate(40ug)

Lane6:SKOVCA3 whole cell lysate(40ug)

Lane7:Panc1 whole cell lysate(40ug)



Immunohistochemistry (IHC) analyzes of p-Filamin 1 (S2152) pAb in paraffin-embedded human breast carcinoma tissue at 1:100.

### Note:

For research use only, not for use in diagnostic procedure.

### Bioworld Technology, Inc.

Add: 1660 South Highway 100, Suite 500 St. Louis Park, MN 55416, USA.

Email: [info@bioworld.com](mailto:info@bioworld.com)

Tel: 6123263284

Fax: 6122933841

### Bioworld technology, co. Ltd.

Add: No 9, weidi road Qixia District Nanjing, 210046, P. R. China.

Email: [info@biogol.com](mailto:info@biogol.com)

Tel: 0086-025-68037686

Fax: 0086-025-68035151



## PRODUCT DATA SHEET

Bioworld Technology, Inc.

---

---

### **Bioworld Technology, Inc.**

Add: 1660 South Highway 100, Suite 500 St. Louis Park,  
MN 55416, USA.

Email: [info@bioworld.com](mailto:info@bioworld.com)

Tel: 6123263284

Fax: 6122933841

### **Bioworld technology, co. Ltd.**

Add: No 9, weidi road Qixia District Nanjing, 210046,  
P. R. China.

Email: [info@biogot.com](mailto:info@biogot.com)

Tel: 0086-025-68037686

Fax: 0086-025-68035151