

## Adducin $\alpha/\beta$ (phospho-S726/713) polyclonal antibody

Catalog: BS4005

Host: Rabbit

Reactivity: Human, Mouse, Rat

### Background:

Adducins are a family of cytoskeletal proteins encoded by three genes (alpha, beta, gamma). Adducin is a heterodimeric protein that consists of related subunits, which are produced from distinct genes but share a similar structure. Alpha and beta adducin include a protease-resistant N-terminal region and a protease-sensitive, hydrophilic C-terminal region. Alpha and gamma adducins are ubiquitously expressed. In contrast, beta adducin is expressed at high levels in brain and hematopoietic tissues. Adducin binds with high affinity to  $Ca^{2+}$ /calmodulin and is a substrate for protein kinases A and C. Alternative splicing results in multiple variants encoding distinct isoforms; however, not all variants have been fully described.

### Product:

1 mg/ml in Phosphate buffered saline (PBS) with 0.05% sodium azide, approx. pH 7.2.

### Molecular Weight:

~ 81 kDa

### Swiss-Prot:

P35611/P35612

### Purification&Purity:

The antibody was affinity-purified from rabbit antiserum by affinity-chromatography using epitope-specific immunogen and the purity is > 95% (by SDS-PAGE).

### Applications:

WB: 1:500~1:1000

IHC: 1:50~1:200

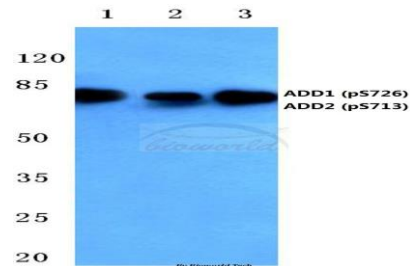
### Storage&Stability:

Store at 4 °C short term. Aliquot and store at -20 °C long term. Avoid freeze-thaw cycles.

### Specificity:

p-Adducin  $\alpha/\beta$  (S726/713) polyclonal antibody detects endogenous levels of Adducin  $\alpha$  protein only when phosphorylated at Ser726 and Adducin  $\beta$  protein only when phosphorylated at Ser713.

### DATA:

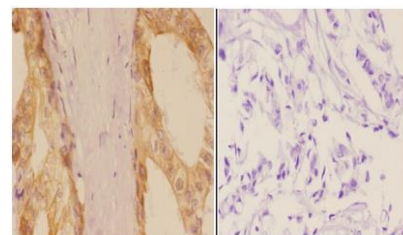


Western blot (WB) analysis of p-Adducin  $\alpha/\beta$  (S726/713) polyclonal antibody at 1:500 dilution

Lane1:HeLa cell lysate treated with PMA

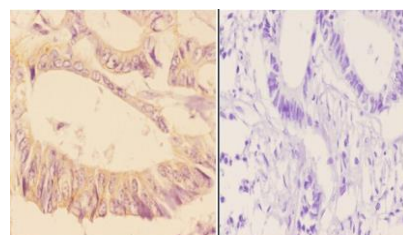
Lane2:SP2/0 cell lysate treated with PMA

Lane3:PC12 cell lysate treated with PMA



BS4005  
Lot C144121

Immunohistochemistry (IHC) analyzes of Adducin  $\alpha/\beta$  (phospho-S726/713) pAb in paraffin-embedded human breast carcinoma tissue at 1:50, showing cytoplasm and membrane staining. Negative control (the right) Using PBS instead of primary antibody, secondary antibody is Goat Anti-Rabbit IgG-biotin followed by avidin-peroxidase.



BS4005  
Lot C144121

Immunohistochemistry (IHC) analyzes of Adducin  $\alpha/\beta$  (phospho-S726/713) pAb in paraffin-embedded human rectum carcinoma tissue at 1:50, showing cytoplasm and membrane staining. Negative control (the right) Using PBS instead of primary antibody, secondary anti-

### Bioworld Technology, Inc.

Add: 1660 South Highway 100, Suite 500 St. Louis Park, MN 55416, USA.

Email: [info@bioworld.com](mailto:info@bioworld.com)

Tel: 6123263284

Fax: 6122933841

### Bioworld technology, co. Ltd.

Add: No 9, weidi road Qixia District Nanjing, 210046, P. R. China.

Email: [info@biogot.com](mailto:info@biogot.com)

Tel: 0086-025-68037686

Fax: 0086-025-68035151



## PRODUCT DATA SHEET

Bioworld Technology, Inc.

body is Goat Anti-Rabbit IgG-biotin followed by avidin-peroxidase.

For research use only, not for use in diagnostic procedure.

Note:

---

### Bioworld Technology, Inc.

Add: 1660 South Highway 100, Suite 500 St. Louis Park,  
MN 55416, USA.

Email: [info@bioworld.com](mailto:info@bioworld.com)

Tel: 6123263284

Fax: 6122933841

### Bioworld technology, co. Ltd.

Add: No 9, weidi road Qixia District Nanjing, 210046,  
P. R. China.

Email: [info@biogot.com](mailto:info@biogot.com)

Tel: 0086-025-68037686

Fax: 0086-025-68035151