

Cystatin C (F122) polyclonal antibody

Catalog: BS3973

Host: Rabbit

Reactivity: Human, Mouse, Rat

BackGround:

Cystatin C is a cysteine (thiol) protease inhibitor that belongs to the type II cystatin gene superfamily and is the most abundant extracellular inhibitor of cysteine proteases. Cystatin C is a constitutively secreted, amyloidogenic protein, which forms a two-fold symmetric dimer and modulates both cysteine protease activity and the expression of class II MHC molecules. Expression of cystatin C is an indicator of kidney function and glomerular filtration rate. Mutations in the cystatin C gene can lead to protein aggregates, which are implicated in hereditary amyloid angiopathy (HCAA) and cerebral hemorrhage. Although both wild-type and mutant cystatin C are capable of forming concentration dependent inactive dimers, mutant cystatin C dimerizes at lower concentrations and is more susceptible to serine proteases, which may facilitate aggregation. In neuronal cells, oxidative stress stimulates expression of cystatin C, which may positively regulate apoptosis.

Product:

1 mg/ml in Phosphate buffered saline (PBS) with 0.05% sodium azide, approx. pH 7.2.

Molecular Weight:

~ 16 kDa

Swiss-Prot:

P01034

Purification&Purity:

The antibody was affinity-purified from rabbit antiserum by affinity-chromatography using epitope-specific immunogen and the purity is > 95% (by SDS-PAGE).

Applications:

WB: 1:500~1:1000

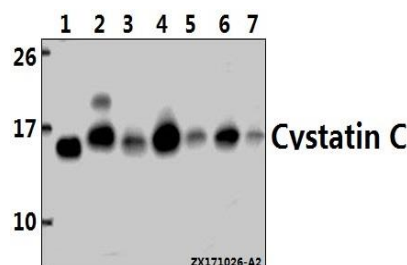
Storage&Stability:

Store at 4 °C short term. Aliquot and store at -20 °C long term. Avoid freeze-thaw cycles.

Specificity:

Cystatin C (F122) polyclonal antibody detects endogenous levels of Cystatin C protein =

DATA:



Western blot (WB) analysis of Cystatin C (F122) pAb at 1:1000 dilution

Lane1:PC3 whole cell lysate(20ug)

Lane2:The Brain tissue lysate of Mouse(40ug)

Lane3:C6 whole cell lysate(40ug)

Lane4:HepG2 whole cell lysate(40ug)

Lane5:H1792 whole cell lysate(40ug)

Lane6:HEK293T whole cell lysate(40ug)

Lane7:MCF-7 whole cell lysate(40ug)

Note:

For research use only, not for use in diagnostic procedure.

Bioworld Technology, Inc.

Add: 1660 South Highway 100, Suite 500 St. Louis Park, MN 55416, USA.

Email: info@bioworld.com

Tel: 6123263284

Fax: 6122933841

Bioworld technology, co. Ltd.

Add: No 9, weidi road Qixia District Nanjing, 210046, P. R. China.

Email: info@biogot.com

Tel: 0086-025-68037686

Fax: 0086-025-68035151