

Dsg2 (V440) polyclonal antibody

Catalog: BS3848

Host: Rabbit

Reactivity: Human, Mouse, Rat

BackGround:

Desmosomes are cell-cell junctions between epithelial, myocardial, and certain other cell types. Desmoglein 2 is a calcium-binding transmembrane glycoprotein component of desmosomes in vertebrate epithelial cells. Currently, three desmoglein subfamily members have been identified and all are members of the cadherin cell adhesion molecule superfamily. These desmoglein gene family members are located in a cluster on chromosome 18. This second family member is expressed in colon, colon carcinoma, and other simple and stratified epithelial-derived cell lines.

Product:

1 mg/ml in Phosphate buffered saline (PBS) with 0.05% sodium azide, approx. pH 7.2.

Molecular Weight:

~ 140 kDa

Swiss-Prot:

Q14126

Purification&Purity:

The antibody was affinity-purified from rabbit antiserum by affinity-chromatography using epitope-specific immunogen and the purity is > 95% (by SDS-PAGE).

Applications:

WB: 1:500~1:1000

IHC: 1:50~1:200

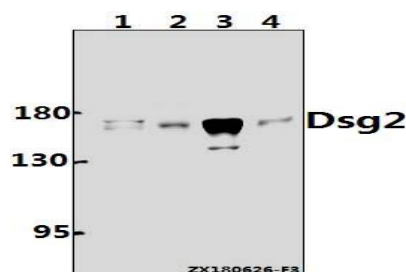
Storage&Stability:

Store at 4 °C short term. Aliquot and store at -20 °C long term. Avoid freeze-thaw cycles.

Specificity:

Dsg2 (V440) polyclonal antibody detects endogenous levels of Dsg2 protein.

DATA:



Western blot (WB) analysis of Dsg2 (V440) pAb at 1:1000 dilution

Lane1:Hela whole cell lysate(20ug)

Lane2:The Embryo tissue lysate of Mouse(40ug)

Lane3:SGC7901 whole cell lysate(40ug)

Lane4:PC12 whole cell lysate(40ug)

Note:

For research use only, not for use in diagnostic procedure.

Bioworld Technology, Inc.

Add: 1660 South Highway 100, Suite 500 St. Louis Park, MN 55416, USA.

Email: info@bioworld.com

Tel: 6123263284

Fax: 6122933841

Bioworld technology, co. Ltd.

Add: No 9, weidi road Qixia District Nanjing, 210046, P. R. China.

Email: info@biogol.com

Tel: 0086-025-68037686

Fax: 0086-025-68035151