

ACAT1 (K266) polyclonal antibody

Catalog: BS3796

Host: Rabbit

Reactivity: Human, Mouse, Rat

BackGround:

ACAT-1 (acetyl-Coenzyme A acetyltransferase 1) is a mitochondrial enzyme involved in the formation and degradation of ketone bodies and is necessary for the proper metabolic processing of isoleucine. Rare defects in the gene encoding ACAT-1 lead to β -ketothiolase deficiency, which is characterized by ketoacidotic attacks. ACAT-2 (acetyl-Coenzyme A acetyltransferase 2) is considered a cytosolic protein and is crucial for cholesterol synthesis. Specifically, both Acetoacetyl-CoA specific thiolases, ACAT-1 and ACAT-2 catalyze the formation of acetoacetyl-CoA from two acetyl-CoA molecules. These enzymes are also capable of the reverse reaction, the cleavage of acetoacetyl-CoA into two acetyl-CoA molecules.

Product:

1 mg/ml in Phosphate buffered saline (PBS) with 0.05% sodium azide, approx. pH 7.2.

Molecular Weight:

~ 45 kDa

Swiss-Prot:

P24752

Purification&Purity:

The antibody was affinity-purified from rabbit antiserum by affinity-chromatography using epitope-specific immunogen and the purity is > 95% (by SDS-PAGE).

Applications:

WB: 1:500~1:1000

IHC: 1:50~1:200

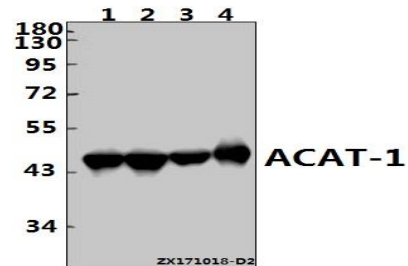
Storage&Stability:

Store at 4 °C short term. Aliquot and store at -20 °C long term. Avoid freeze-thaw cycles.

Specificity:

ACAT1 (K266) polyclonal antibody detects endogenous levels of ACAT1 protein.

DATA:



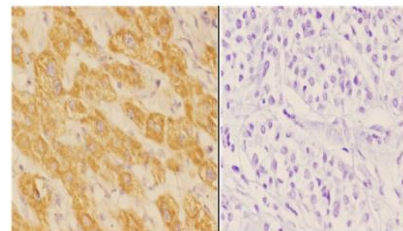
Western blot (WB) analysis of ACAT-1 (K266) pAb at 1:1000 dilution

Lane1:HEK293T whole cell lysate(20ug)

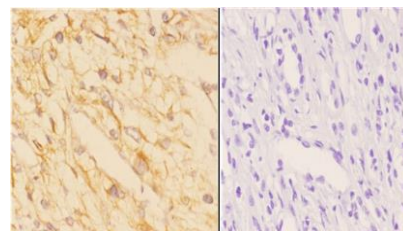
Lane2:HepG2 whole cell lysate(20ug)

Lane3:The Lung tissue lysate of Rat(20ug)

Lane4:The Lung tissue lysate of Mouse(10ug)



Immunohistochemistry (IHC) analyzes of ACAT1 (K266) pAb in paraffin-embedded human liver carcinoma tissue at 1:50, showing cytoplasmic staining. Negative control (the right) Using PBS instead of primary antibody, secondary antibody is Goat Anti-Rabbit IgG-biotin followed by avidin-peroxidase.



Immunohistochemistry (IHC) analyzes of ACAT1 (K266) pAb in paraffin-embedded human kidney carcinoma tissue at 1:50, showing cytoplasmic staining. Negative control (the right) Using PBS instead of primary antibody, secondary antibody is Goat Anti-Rabbit IgG-biotin fol-

Bioworld Technology, Inc.

Add: 1660 South Highway 100, Suite 500 St. Louis Park, MN 55416, USA.

Email: info@bioworld.com

Tel: 6123263284

Fax: 6122933841

Bioworld technology, co. Ltd.

Add: No 9, weidi road Qixia District Nanjing, 210046, P. R. China.

Email: info@biogot.com

Tel: 0086-025-68037686

Fax: 0086-025-68035151



PRODUCT DATA SHEET

Bioworld Technology, Inc.

lowed by avidin-peroxidase.

For research use only, not for use in diagnostic procedure.

Note:

Bioworld Technology, Inc.

Add: 1660 South Highway 100, Suite 500 St. Louis Park,
MN 55416, USA.

Email: info@bioworld.com

Tel: 6123263284

Fax: 6122933841

Bioworld technology, co. Ltd.

Add: No 9, weidi road Qixia District Nanjing, 210046,
P. R. China.

Email: info@biogot.com

Tel: 0086-025-68037686

Fax: 0086-025-68035151