

## GRK 2 (V678) polyclonal antibody

Catalog: BS3762

Host: Rabbit

Reactivity: Human, Mouse, Rat

### Background:

Heterotrimeric G protein-mediated signal transduction is a dynamically regulated process with the intensity of signal decreasing over time despite the continued presence of the agonist. This phenomenon, referred to as agonist-mediated desensitization, involves phosphorylation of the receptor by two classes of enzymes. The first are the second messenger-regulated kinases such as c-AMP dependent protein kinase A and protein kinase C. The second are the G protein-coupled receptor kinases (GRKs). At least seven members of the GRK family have been identified. These include rhodopsin kinase, GRK 1; two forms of  $\beta$ -adrenergic receptor kinase, GRK 2 ( $\beta$ ARK,  $\beta$ ARK1) and GRK 3 ( $\beta$ ARK2); IT-11 (GRK 4); GRK 5, GRK 6 and GRK 7. Phosphorylation of receptors by GRKs appears to be strictly dependent on the receptor being in its agonist-activated state.

### Product:

1 mg/ml in Phosphate buffered saline (PBS) with 0.05% sodium azide, approx. pH 7.2.

### Molecular Weight:

~ 80 kDa

### Swiss-Prot:

P25098

### Purification&Purity:

The antibody was affinity-purified from rabbit antiserum by affinity-chromatography using epitope-specific immunogen and the purity is > 95% (by SDS-PAGE).

### Applications:

WB: 1:500~1:1000

IHC: 1:50~1:200

### Storage&Stability:

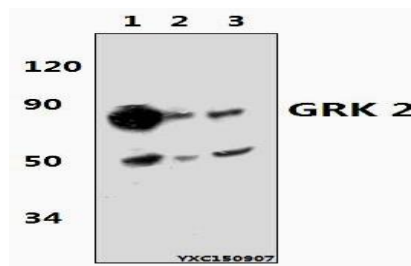
Store at 4 °C short term. Aliquot and store at -20 °C long

term. Avoid freeze-thaw cycles.

### Specificity:

GRK 2 (V678) polyclonal antibody detects endogenous levels of GRK 2 protein.

### DATA:

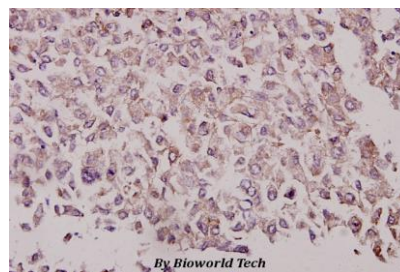


Western blot (WB) analysis of GRK 2 (V678) polyclonal antibody at 1:500 dilution

Lane1:THP-1 whole cell lysate(40 $\mu$ g)

Lane2:RAW264.7 whole cell lysate(40 $\mu$ g)

Lane3:PC12 whole cell lysate(40 $\mu$ g)



Immunohistochemistry (IHC) analyzes of GRK 2 (V678) pAb in paraffin-embedded human breast carcinoma tissue at 1:50.

### Note:

For research use only, not for use in diagnostic procedure.

### Bioworld Technology, Inc.

Add: 1660 South Highway 100, Suite 500 St. Louis Park, MN 55416, USA.

Email: [info@bioworld.com](mailto:info@bioworld.com)

Tel: 6123263284

Fax: 6122933841

### Bioworld technology, co. Ltd.

Add: No 9, weidi road Qixia District Nanjing, 210046, P. R. China.

Email: [info@biogot.com](mailto:info@biogot.com)

Tel: 0086-025-68037686

Fax: 0086-025-68035151