

Cyclin E2 (N387) polyclonal antibody

Catalog: BS3710

Host: Rabbit

Reactivity: Human, Mouse

BackGround:

Cyclin E, along with the three cyclin D proteins and cyclin C, has been shown to represent a putative G1 cyclin on the basis of its cyclic pattern of mRNA expression, with maximal levels being detected near the G1/S boundary. cyclin E has been found to be associated with the transcription factor E2F in a temporally regulated manner. Cyclin E2 is a cyclin E-related protein that specifically interacts with Cdk2 and Cdk3 and with p27 and p21. Cyclin E2 expression peaks at the G1/S phase transition of the cell cycle, in parallel with cyclin E. Whereas cyclin E1 is expressed in most proliferating normal and tumor cells, cyclin E2 levels are low or undetectable in non-transformed cells, and are elevated in tumor-derived cells.

Product:

1 mg/ml in Phosphate buffered saline (PBS) with 0.05% sodium azide, approx. pH 7.2.

Molecular Weight:

~ 46 kDa

Swiss-Prot:

O96020

Purification&Purity:

The antibody was affinity-purified from rabbit antiserum by affinity-chromatography using epitope-specific immunogen and the purity is > 95% (by SDS-PAGE).

Applications:

IHC: 1:50~1:200

IF: 1:50~1:200

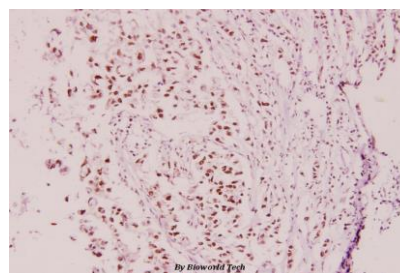
Storage&Stability:

Store at 4 °C short term. Aliquot and store at -20 °C long term. Avoid freeze-thaw cycles.

Specificity:

Cyclin E2 (N387) polyclonal antibody detects endogenous levels of Cyclin E2 protein.

DATA:



Immunohistochemistry (IHC) analyzes of Cyclin E2 (N387) pAb in paraffin-embedded human breast carcinoma tissue at 1:100.

Note:

For research use only, not for use in diagnostic procedure.

Bioworld Technology, Inc.

Add: 1660 South Highway 100, Suite 500 St. Louis Park, MN 55416, USA.

Email: info@bioworld.com

Tel: 6123263284

Fax: 6122933841

Bioworld technology, co. Ltd.

Add: No 9, weidi road Qixia District Nanjing, 210046, P. R. China.

Email: info@biogot.com

Tel: 0086-025-68037686

Fax: 0086-025-68035151