

## AChE (K585) polyclonal antibody

Catalog: BS3694

Host: Rabbit

Reactivity: Human, Mouse, Rat

### Background:

Acetylcholinesterase (AChE) hydrolyzes acetylcholine at synaptic junctions. Alternative mRNA splicing gives rise to three forms of AChE. The T form, also known as the asymmetric form, is soluble and is present in synapses. The H form is also known as the globular form and is present on the outer surfaces of cell membranes. The R form is not known to be a functional species. AChE globular form subunits are GPI-anchored to cell membranes and asymmetric subunits are anchored to basal lamina components by a collagen tail. The catalytic subunits of AChE are oligomers composed of disulfide-linked homodimers. The loss of AChE from cholinergic and noncholinergic neurons in the brain is seen in patients with Alzheimer's disease. However, AChE activity is increased around amyloid plaques, which may be due to a disturbance in calcium homeostasis involving the opening of L-type voltage-dependent calcium channels.

### Product:

1 mg/ml in Phosphate buffered saline (PBS) with 0.05% sodium azide, approx. pH 7.2.

### Molecular Weight:

~ 70 kDa

### Swiss-Prot:

P22303

### Purification&Purity:

The antibody was affinity-purified from rabbit antiserum by affinity-chromatography using epitope-specific immunogen and the purity is > 95% (by SDS-PAGE).

### Applications:

IHC: 1:50~1:200

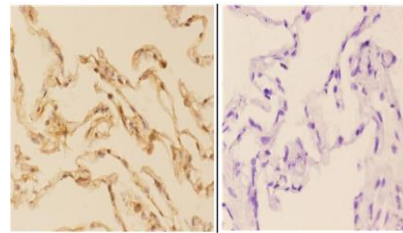
### Storage&Stability:

Store at 4 °C short term. Aliquot and store at -20 °C long term. Avoid freeze-thaw cycles.

### Specificity:

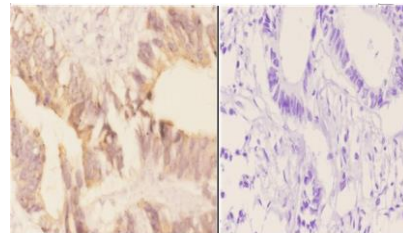
AChE (K585) polyclonal antibody detects endogenous levels of AChE protein.

### DATA:



BS3694  
Lot C744121

Immunohistochemistry (IHC) analyzes of AChE (K585) pAb in paraffin-embedded human lung carcinoma tissue at 1:50, showing membrane and nuclear staining. Negative control (the right) Using PBS instead of primary antibody, secondary antibody is Goat Anti-Rabbit IgG-biotin followed by avidin-peroxidase.



BS3694  
Lot C744121

Immunohistochemistry (IHC) analyzes of AChE (K585) pAb in paraffin-embedded human rectum carcinoma tissue at 1:50, showing membrane and nuclear staining. Negative control (the right) Using PBS instead of primary antibody, secondary antibody is Goat Anti-Rabbit IgG-biotin followed by avidin-peroxidase.

### Note:

For research use only, not for use in diagnostic procedure.

### Bioworld Technology, Inc.

Add: 1660 South Highway 100, Suite 500 St. Louis Park, MN 55416, USA.

Email: [info@bioworld.com](mailto:info@bioworld.com)

Tel: 6123263284

Fax: 6122933841

### Bioworld technology, co. Ltd.

Add: No 9, weidi road Qixia District Nanjing, 210046, P. R. China.

Email: [info@biogot.com](mailto:info@biogot.com)

Tel: 0086-025-68037686

Fax: 0086-025-68035151