

## ERK1/2 (H197) polyclonal antibody

Catalog: BS3628

Host: Rabbit

Reactivity: Human, Mouse, Rat

### Background:

The activation of signal transduction pathways by growth factors, hormones and neurotransmitters is mediated through two closely related MAP kinases, p44 and p42, designated extracellular-signal related kinase 1 (ERK 1) and ERK 2, respectively. ERK proteins are regulated by dual phosphorylation at specific tyrosine and Threonine sites mapping within a characteristic Thr- Glu-Tyr motif. Phosphorylation at both the Thr and Tyr residues is required for full enzymatic activation. In response to activation, MAP kinases phosphorylate downstream components on Serine and Threonine. Upstream MAP kinase regulators include MAP kinase kinase (MEK), MEK kinase and Raf-1. The ERK family has three additional members: ERK 3, ERK 5 and ERK 6.

### Product:

1 mg/ml in Phosphate buffered saline (PBS) with 0.05% sodium azide, approx. pH 7.2.

### Molecular Weight:

~ 42,44 kDa

### Swiss-Prot:

P27361/P28482

### Purification&Purity:

The antibody was affinity-purified from rabbit antiserum by affinity-chromatography using epitope-specific immunogen and the purity is > 95% (by SDS-PAGE).

### Applications:

WB 1:500 - 1:1000

IHC 1:50 - 1:100

IP 1:10 - 1:100

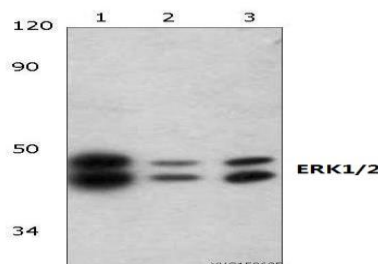
### Storage&Stability:

Store at 4 °C short term. Aliquot and store at -20 °C long term. Avoid freeze-thaw cycles.

### Specificity:

ERK1/2 (H197) polyclonal antibody detects endogenous levels of ERK1/2 protein.

### DATA:

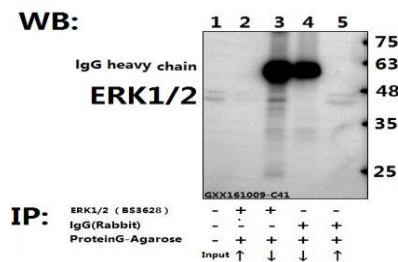


Western blot (WB) analysis of ERK1/2 (H197) at 1:2000 dilution

Lane1:Hela whole cell lysate(15µg)

Lane2:NIH-3T3 whole cell lysate(40µg)

Lane3:H9C2 whole cell lysate(15µg)



Immunoprecipitation of the Brain tissue lysate of Rat using ERK1/2 (H197) pAb (Sephacrose Bead Conjugate) #BD0047(lane 2 and lane 3) and Nonspecific IgG Control (Sephacrose Bead Conjugate)#BD0047 (lane 4 and lane 5) .Lane 1 is 30% input. The western blot was probed using ERK1/2 (H197) pAb #BS3628. “↑” (supernatant); “↓” (deposition)

### Note:

For research use only, not for use in diagnostic procedure.

### Bioworld Technology, Inc.

Add: 1660 South Highway 100, Suite 500 St. Louis Park, MN 55416, USA.

Email: [info@bioworld.com](mailto:info@bioworld.com)

Tel: 6123263284

Fax: 6122933841

### Bioworld technology, co. Ltd.

Add: No 9, weidi road Qixia District Nanjing, 210046, P. R. China.

Email: [info@biogot.com](mailto:info@biogot.com)

Tel: 0086-025-68037686

Fax: 0086-025-68035151