

MRP-S34 (K214) polyclonal antibody

Catalog: BS3327

Host: Rabbit

Reactivity: Human, Mouse, Rat

BackGround:

Mitochondrial ribosomes consist of a large 39S subunit and a small 28S subunit, both of which are comprised of multiple mitochondrial ribosomal proteins (MRPs) that are encoded by nuclear genes and are essential for protein synthesis within mitochondria. MRP-S34 (mitochondrial ribosomal protein S34), is a 218 amino acid protein that localizes to the mitochondrion, where it exists as a component of the 28S ribosomal subunit and works in conjunction with other MRPs to mediate protein synthesis. The gene encoding MRP-S34 maps to human chromosome 16, which encodes over 900 genes and comprises nearly 3% of the human genome.

Product:

1 mg/ml in Phosphate buffered saline (PBS) with 0.05% sodium azide, approx. pH 7.2.

Molecular Weight:

~ 26 kDa

Swiss-Prot:

P82930

Purification&Purity:

The antibody was affinity-purified from rabbit antiserum by affinity-chromatography using epitope-specific immunogen and the purity is > 95% (by SDS-PAGE).

Applications:

WB: 1:500~1:1000

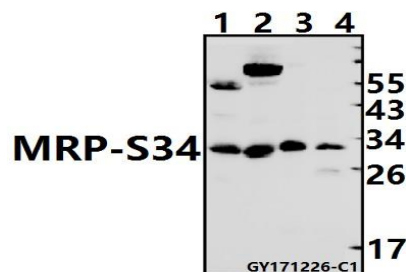
Storage&Stability:

Store at 4 °C short term. Aliquot and store at -20 °C long term. Avoid freeze-thaw cycles.

Specificity:

MRP-S34 (K214) polyclonal antibody detects endogenous levels of MRP-S34 protein.

DATA:



Western blot (WB) analysis of MRP-S34 (K214) pAb at 1:1000 dilution

Lane1: The Kidney tissue lysate of Rat(40ug)

Lane2: The Kidney tissue lysate of Mouse(40ug)

Lane3: HEK293T whole cell lysate(40ug)

Lane4: Panc1 whole cell lysate(40ug)

Note:

For research use only, not for use in diagnostic procedure.

Bioworld Technology, Inc.

Add: 1660 South Highway 100, Suite 500 St. Louis Park, MN 55416, USA.

Email: info@bioworld.com

Tel: 6123263284

Fax: 6122933841

Bioworld technology, co. Ltd.

Add: No 9, weidi road Qixia District Nanjing, 210046, P. R. China.

Email: info@biogol.com

Tel: 0086-025-68037686

Fax: 0086-025-68035151