

Gα t1 (M104) polyclonal antibody

Catalog: BS3311

Host: Rabbit

Reactivity: Human, Mouse, Rat

BackGround:

Heterotrimeric G proteins function to relay information from cell surface receptors to intracellular effectors. Each of a very broad range of receptors specifically detects an extracellular stimulus (a photon, pheromone, odorant, hormone or neurotransmitter) while the effectors (i.e. adenylyl cyclase), which act to generate one or more intracellular messengers, are less numerous. In mammals, G protein α , β and γ polypeptides are encoded by at least 16, 4 and 7 genes, respectively. Most interest in G proteins has been focused on their α subunits, since these proteins bind and hydrolyze GTP and most obviously regulate the activity of the best studied effectors. Four distinct classes of G α subunits have been identified; these include Gs, Gi, Gq and G α 12/13. The Gi class comprises all the known α subunits that are susceptible to pertussis toxin modifications, including G α i-1, G α i-2, G α i-3, G α o, G α t1, G α t2, G α z and G α gust. In the well characterized visual system, photorhodopsin catalyzes the exchange of guanine nucleotides bound to the visual transducin G α subunits (G α t1 in rod cells and G α t2 in cone cells).

Product:

1 mg/ml in Phosphate buffered saline (PBS) with 0.05% sodium azide, approx. pH 7.2.

Molecular Weight:

~ 36 kDa

Swiss-Prot:

P11488

Purification&Purity:

The antibody was affinity-purified from rabbit antiserum

by affinity-chromatography using epitope-specific immunogen and the purity is > 95% (by SDS-PAGE).

Applications:

WB: 1:500~1:1000

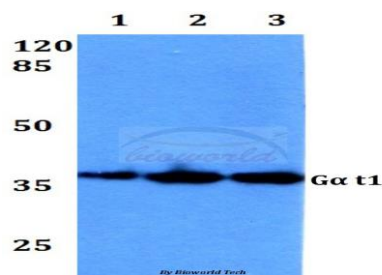
Storage&Stability:

Store at 4 °C short term. Aliquot and store at -20 °C long term. Avoid freeze-thaw cycles.

Specificity:

Gα t1 (M104) polyclonal antibody detects endogenous levels of Gα t1 protein.

DATA:



Western blot (WB) analysis of Gα t1 (M104) polyclonal antibody at 1:500 dilution

Lane1:HEK293T whole cell lysate

Lane2:sp2/0 whole cell lysate

Lane3:PC12 whole cell lysate

Note:

For research use only, not for use in diagnostic procedure.

Bioworld Technology, Inc.

Add: 1660 South Highway 100, Suite 500 St. Louis Park, MN 55416, USA.

Email: info@bioworld.com

Tel: 6123263284

Fax: 6122933841

Bioworld technology, co. Ltd.

Add: No 9, weidi road Qixia District Nanjing, 210046, P. R. China.

Email: info@biogol.com

Tel: 0086-025-68037686

Fax: 0086-025-68035151