

## ARSA (R291) polyclonal antibody

Catalog: BS3077

Host: Rabbit

Reactivity: Human,Rat

### BackGround:

ASA (arylsulfatase A), also known as Cerebroside-sulfatase, ARSA or MLD, is a 507 amino acid lysosomal protein that belongs to the sulfatase family. Functioning as a homodimer at a neutral pH and as a homooctamer at an acidic pH, ASA uses magnesium as a cofactor to catalyze the H<sub>2</sub>O-dependent hydrolysis of cerebroside 3-sulfate to cerebroside and sulfate. Defects in the gene encoding ASA are a cause of metachromatic leukodystrophy (MLD), an intralysosomal storage disease that is characterized by ataxias, dementia, seizures, spastic tetraparesis and, ultimately, death. Additionally, defects in ASA activity are associated with multiple sulfatase deficiency (MSD), a disorder that results in decreased activity of all known sulfatases and is generally characterized by metachromatic leukodystrophy, mucopolysaccharidosis, chondrodysplasia punctata, hydrocephalus, ichthyosis, neurologic deterioration and developmental delay.

### Product:

1 mg/ml in Phosphate buffered saline (PBS) with 0.05% sodium azide, approx. pH 7.2.

### Molecular Weight:

~ 54 kDa

### Swiss-Prot:

P15289

### Purification&Purity:

The antibody was affinity-purified from rabbit antiserum by affinity-chromatography using epitope-specific immunogen and the purity is > 95% (by SDS-PAGE).

### Applications:

WB: 1:500~1:1000

IHC: 1:50~1:200

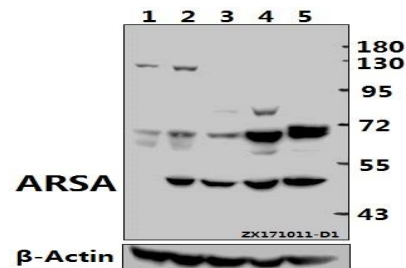
### Storage&Stability:

Store at 4 °C short term. Aliquot and store at -20 °C long term. Avoid freeze-thaw cycles.

### Specificity:

ARSA (R291) polyclonal antibody detects endogenous levels of ARSA protein.

### DATA:



Western blot (WB) analysis of ARSA (R291) pAb at 1:500 dilution

Lane1: AML-12 whole cell lysate(40ug)

Lane2: C6 whole cell lysate(40ug)

Lane3: H1792 whole cell lysate(40ug)

Lane4: HEK293T whole cell lysate(40ug)

Lane5: PC3 whole cell lysate(40ug)

### Note:

For research use only, not for use in diagnostic procedure.

### Bioworld Technology, Inc.

Add: 1660 South Highway 100, Suite 500 St. Louis Park, MN 55416, USA.

Email: [info@bioworld.com](mailto:info@bioworld.com)

Tel: 6123263284

Fax: 6122933841

### Bioworld technology, co. Ltd.

Add: No 9, weidi road Qixia District Nanjing, 210046, P. R. China.

Email: [info@biogot.com](mailto:info@biogot.com)

Tel: 0086-025-68037686

Fax: 0086-025-68035151