

## hnRNP K (Y280) polyclonal antibody

Catalog: BS2997

Host: Rabbit

Reactivity: Human, Mouse, Rat

### BackGround:

The majority of hnRNP proteins components are localized to the nucleus; however some shuttle between the nucleus and the cytoplasm, such as hnRNP K. hnRNP K, a 65 kDa protein, recruits a variety of molecular partners through two K homologous (KH) domains, which are required for protein-protein interactions. hnRNP K also contains several potential phosphorylation sites, including Ser 302, the major site of PKCd phosphorylation, which are thought to regulate various cellular functions, including sequence-specific DNA binding, transcription, RNA binding and nucleocytoplasmic shuttling.

### Product:

1 mg/ml in Phosphate buffered saline (PBS) with 15 mM sodium azide, approx. pH 7.2.

### Molecular Weight:

~ 58-62 kDa

### Swiss-Prot:

P61978

### Purification&Purity:

The antibody was affinity-purified from rabbit antiserum by affinity-chromatography using epitope-specific immunogen and the purity is > 95% (by SDS-PAGE).

### Applications:

WB: 1:500~1:1000

IHC: 1:50~1:200

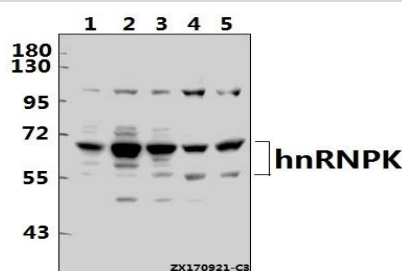
### Storage&Stability:

Store at 4 °C short term. Aliquot and store at -20 °C long term. Avoid freeze-thaw cycles.

### Specificity:

hnRNP K (Y280) polyclonal antibody detects endogenous levels of hnRNP K protein.

### DATA:



Western blot (WB) analysis of hnRNP K (Y280) pAb at 1:1000 dilution

Lane1:HCC827 whole cell lysate(40ug)

Lane2:HEK293T whole cell lysate(20ug)

Lane3:A549 whole cell lysate(40ug)

Lane4:C6 whole cell lysate(40ug)

Lane5:CT26 whole cell lysate(40ug)

### Note:

For research use only, not for use in diagnostic procedure.

### Bioworld Technology, Inc.

Add: 1660 South Highway 100, Suite 500 St. Louis Park, MN 55416, USA.

Email: [info@bioworld.com](mailto:info@bioworld.com)

Tel: 6123263284

Fax: 6122933841

### Bioworld technology, co. Ltd.

Add: No 9, weidi road Qixia District Nanjing, 210046, P. R. China.

Email: [info@biogot.com](mailto:info@biogot.com)

Tel: 0086-025-68037686

Fax: 0086-025-68035151