

Melanopsin (L470) polyclonal antibody

Catalog: BS2859

Host: Rabbit

Reactivity: Human, Mouse, Rat

BackGround:

Melanopsin is an opsin-like protein found in the retinal ganglion cells of mammals. Melanopsin is believed to be part of a secondary optical system that parallels that of the classic rod and cone system. This second system reports directly to the suprachiasmatic nucleus and is responsible for regulation of circadian rhythms. Melanopsin is believed to be the primary photopigment responsible for the regulation of these circadian rhythms, and Melanopsin knockout mice have been generated which demonstrate decreased capacity to entrain to light and dark cycles.

Product:

1 mg/ml in Phosphate buffered saline (PBS) with 0.05% sodium azide, approx. pH 7.2.

Molecular Weight:

~ 55 kDa

Swiss-Prot:

Q9UHM6

Purification&Purity:

The antibody was affinity-purified from rabbit antiserum by affinity-chromatography using epitope-specific immunogen and the purity is > 95% (by SDS-PAGE).

Applications:

IHC: 1:50~1:200

IF: 1:50~1:200

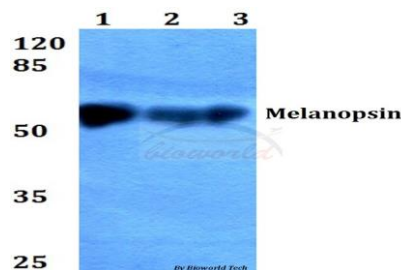
Storage&Stability:

Store at 4 °C short term. Aliquot and store at -20 °C long term. Avoid freeze-thaw cycles.

Specificity:

Melanopsin (L470) polyclonal antibody detects endogenous levels of Melanopsin protein.

DATA:



Note:

For research use only, not for use in diagnostic procedure.

Bioworld Technology, Inc.

Add: 1660 South Highway 100, Suite 500 St. Louis Park, MN 55416, USA.

Email: info@bioworld.com

Tel: 6123263284

Fax: 6122933841

Bioworld technology, co. Ltd.

Add: No 9, weidi road Qixia District Nanjing, 210046, P. R. China.

Email: info@biogot.com

Tel: 0086-025-68037686

Fax: 0086-025-68035151