

Enkephalopsin (F202) polyclonal antibody

Catalog: BS2858

Host: Rabbit

Reactivity: Human, Mouse

BackGround:

Opsins, including Enkephalopsin, are members of the superfamily of guanine nucleotide-binding protein (G protein)-coupled receptors, which function through the activation of a G protein and an effector enzyme. Opsin proteins consist of a single polypeptide chain of 340 to 500 amino acids that form 7 alpha-helical transmembrane regions connected by cytoplasmic and extracellular loops.

Product:

1 mg/ml in Phosphate buffered saline (PBS) with 15 mM sodium azide, approx. pH 7.2.

Molecular Weight:

~47 kDa

Swiss-Prot:

Q9H1Y3

Purification&Purity:

The antibody was affinity-purified from rabbit antiserum by affinity-chromatography using epitope-specific immunogen and the purity is > 95% (by SDS-PAGE).

Applications:

WB: 1:500~1:1000

IHC: 1:50~1:200

IF: 1:50~1:200

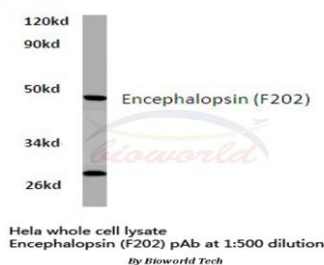
Storage&Stability:

Store at 4 °C short term. Aliquot and store at -20 °C long term. Avoid freeze-thaw cycles.

Specificity:

Enkephalopsin (F202) polyclonal antibody detects endogenous levels of Enkephalopsin protein.

DATA:



Western blot (WB) analysis of Enkephalopsin (F202) polyclonal antibody in extracts from HeLa cells.

Note:

For research use only, not for use in diagnostic procedure.

Bioworld Technology, Inc.

Add: 1660 South Highway 100, Suite 500 St. Louis Park,
MN 55416, USA.

Email: info@bioworld.com

Tel: 6123263284

Fax: 6122933841

Bioworld technology, co. Ltd.

Add: No 9, weidi road Qixia District Nanjing, 210046,
P. R. China.

Email: info@biogot.com

Tel: 0086-025-68037686

Fax: 0086-025-68035151