

AChR α 1 (E217) polyclonal antibody

Catalog: BS2850

Host: Rabbit

Reactivity: Human, Mouse, Rat

Background:

Nicotinic acetylcholine receptors (AChRs) are found at the postsynaptic membrane of the neuromuscular junction and bind acetylcholine molecules, allowing ions to move through the pore. Glutamate receptors are found in the postsynaptic membrane of cells in the central nervous system. AChR α 1, also known as ACHRD, CHRNA, CMS2A, FCCMS, SCCMS or CHRNA1, is a 482 amino acid multi-pass membrane protein that exists as two alternatively spliced isoforms, which are expressed in different tissues. Isoform 1 is only expressed in skeletal muscle whereas isoform 2 is constitutively expressed in skeletal muscle, brain, heart, kidney, liver, lung and thymus.

Product:

1 mg/ml in Phosphate buffered saline (PBS) with 0.05% sodium azide, approx. pH 7.2.

Molecular Weight:

~ 55 kDa

Swiss-Prot:

P02708

Purification & Purity:

The antibody was affinity-purified from rabbit antiserum by affinity-chromatography using epitope-specific immunogen and the purity is > 95% (by SDS-PAGE).

Applications:

WB: 1:500~1:1000

IHC: 1:50~1:200

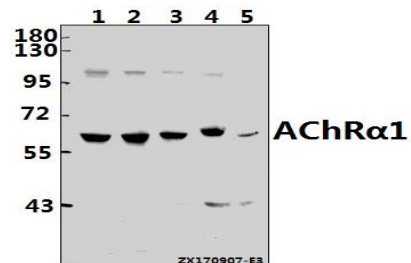
Storage & Stability:

Store at 4 °C short term. Aliquot and store at -20 °C long term. Avoid freeze-thaw cycles.

Specificity:

AChR α 1 (E217) polyclonal antibody detects endogenous levels of AChR α 1 protein.

DATA:



Western blot (WB) analysis of AChR α 1 (E217) pAb at 1:500 dilution

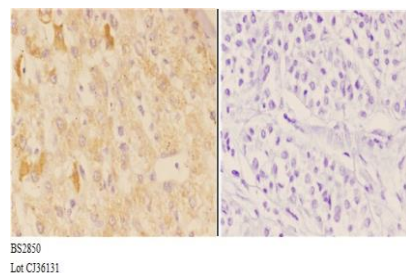
Lane 1: HepG2 whole cell lysate (40ug)

Lane 2: A549 whole cell lysate (40ug)

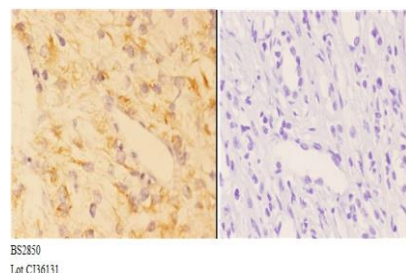
Lane 3: PC3 whole cell lysate (40ug)

Lane 4: CT26 whole cell lysate (40ug)

Lane 5: H9C2 whole cell lysate (40ug)



Immunohistochemistry (IHC) analyzes of AChR α 1 (E217) pAb in paraffin-embedded human liver carcinoma tissue at 1:50, showing membrane and cytoplasmic staining. Negative control (the right) Using PBS instead of primary antibody, secondary antibody is Goat Anti-Rabbit IgG-biotin followed by avidin-peroxidase.



Immunohistochemistry (IHC) analyzes of AChR α 1 (E217) pAb in paraffin-embedded human kidney carcinoma tissue at 1:50, showing membrane and cytoplasmic staining. Negative control (the right) Using PBS instead of primary antibody, secondary antibody is Goat Anti-Rabbit

Bioworld Technology, Inc.

Add: 1660 South Highway 100, Suite 500 St. Louis Park, MN 55416, USA.

Email: info@bioworld.com

Tel: 6123263284

Fax: 6122933841

Bioworld technology, co. Ltd.

Add: No 9, weidi road Qixia District Nanjing, 210046, P. R. China.

Email: info@biogot.com

Tel: 0086-025-68037686

Fax: 0086-025-68035151



PRODUCT DATA SHEET

Bioworld Technology, Inc.

IgG-biotin followed by avidin-peroxidase.

For research use only, not for use in diagnostic procedure.

Note:

Bioworld Technology, Inc.

Add: 1660 South Highway 100, Suite 500 St. Louis Park,
MN 55416, USA.

Email: info@bioworld.com

Tel: 6123263284

Fax: 6122933841

Bioworld technology, co. Ltd.

Add: No 9, weidi road Qixia District Nanjing, 210046,
P. R. China.

Email: info@biogot.com

Tel: 0086-025-68037686

Fax: 0086-025-68035151