

## NPY2-R (D42) polyclonal antibody

Catalog: BS2818

Host: Rabbit

Reactivity: Human, Mouse, Rat

### BackGround:

NPY2-R is a member of the Gprotein-coupled receptor super-family, and like other members has seven putative transmembrane domains. However, NPY2-R gene consists of two exons, unlike the contiguous structure of other G-protein-coupled receptor genes. NPY2-R shares a 31% sequence identity with NPY1-R. NPY2-R is expressed in the presynaptic membranes of the central nervous system, and to a lesser extent the peripheral nervous system. NPY2-R associates (from highest to lowest affinity) with carboxyl terminals of unphosphorylated Peptide YY (PYY) (phosphorylation of PYY greatly reduces its binding affinity), NPY, and Pancreatic Peptide. Depending on the cell type, NPY2-R couples with different G proteins, which act as different second messengers. NPY2-R reduces the effects of depolarization, calcium ion currents in arterial smooth muscle by through association with NPY.

### Product:

1 mg/ml in Phosphate buffered saline (PBS) with 15 mM sodium azide, approx. pH 7.2.

### Molecular Weight:

~ 43 kDa

### Swiss-Prot:

P49146

### Purification&Purity:

The antibody was affinity-purified from rabbit antiserum by affinity-chromatography using epitope-specific immunogen and the purity is > 95% (by SDS-PAGE).

### Applications:

IHC: 1:50~1:200

IF: 1:50~1:200

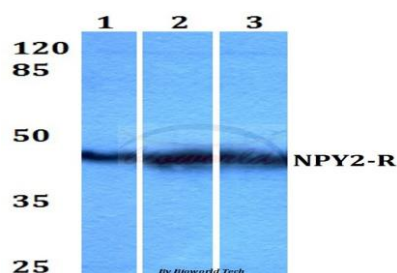
### Storage&Stability:

Store at 4 °C short term. Aliquot and store at -20 °C long term. Avoid freeze-thaw cycles.

### Specificity:

NPY2-R (D42) polyclonal antibody detects endogenous levels of NPY2-R protein.

### DATA:



### Note:

For research use only, not for use in diagnostic procedure.

### Bioworld Technology, Inc.

Add: 1660 South Highway 100, Suite 500 St. Louis Park, MN 55416, USA.

Email: [info@bioworld.com](mailto:info@bioworld.com)

Tel: 6123263284

Fax: 6122933841

### Bioworld technology, co. Ltd.

Add: No 9, weidi road Qixia District Nanjing, 210046, P. R. China.

Email: [info@biogol.com](mailto:info@biogol.com)

Tel: 0086-025-68037686

Fax: 0086-025-68035151