

CYP2D6 (A277) polyclonal antibody

Catalog: BS2681

Host: Rabbit

Reactivity: Human

BackGround:

Enhanced CYP2D6 activity has been related to malignancies of the bladder, liver, pharynx, and stomach and, especially, to cigarette-smoking-induced lung cancer. The data suggests that enhanced CYP2D6-mediated metabolism of one or more dietary and other environmental agents, to form a reactive intermediate, plays a role in cancer initiation and/or promotion in various tissues. CYP2D6 polymorphism, which is responsible for the variation in metabolism of debrisoquine 4-hydroxylase, is important in the metabolism of more than 30 drugs and environmental chemicals, including as much as 20% of all commonly prescribed drugs.

Product:

1 mg/ml in Phosphate buffered saline (PBS) with 0.05% sodium azide, approx. pH 7.2.

Molecular Weight:

~ 55 kDa

Swiss-Prot:

P10635

Purification&Purity:

The antibody was affinity-purified from rabbit antiserum by affinity-chromatography using epitope-specific immunogen and the purity is > 95% (by SDS-PAGE).

Applications:

WB: 1:500~1:1000

IHC: 1:50~1:200

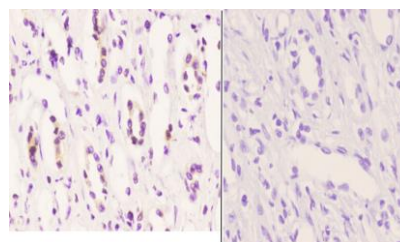
Storage&Stability:

Store at 4 °C short term. Aliquot and store at -20 °C long term. Avoid freeze-thaw cycles.

Specificity:

CYP2D6 (A277) polyclonal antibody detects endogenous levels of CYP2D6 protein.

DATA:



BS2681
Lot CA36131

Immunohistochemistry (IHC) analyzes of CYP2D6 (A277) pAb in paraffin-embedded human kidney carcinoma tissue at 1:50, showing endoplasmic reticulum membrane staining. Negative control (the right) Using PBS instead of primary antibody, secondary antibody is Goat Anti-Rabbit IgG-biotin followed by avidin-peroxidase.

Note:

For research use only, not for use in diagnostic procedure.

Bioworld Technology, Inc.

Add: 1660 South Highway 100, Suite 500 St. Louis Park, MN 55416, USA.

Email: info@bioworld.com

Tel: 6123263284

Fax: 6122933841

Bioworld technology, co. Ltd.

Add: No 9, weidi road Qixia District Nanjing, 210046, P. R. China.

Email: info@biogot.com

Tel: 0086-025-68037686

Fax: 0086-025-68035151