

## Dok-2 (R293) polyclonal antibody

Catalog: BS2637

Host: Rabbit

Reactivity: Human, Mouse

### BackGround:

Dok-1 associates with the Ras GTPase activating protein (Ras GAP) upon tyrosine phosphorylation. Evidence suggests that p62 Dok-1 is a substrate of the constitutive tyrosine kinase activity of p210 Bcr-Abl, a fusion protein caused by the t(9;22) translocation and associated with chronic myelogenous leukemia. Dok-1, as well as the tyrosine kinase substrates IRS-1 and Cas, is a member of a class of “docking” proteins which contain multiple tyrosine residues and putative SH2 binding sites. Dok-1 is suspected to be the substrate phosphorylated in response to stimulation by a number of growth factors, including PDGF, VEGF, insulin and IGF. Dok-2 (also designated p56 Dok) has also been identified as a potential mediator of the effects of p210 Bcr-Abl.

### Product:

1 mg/ml in Phosphate buffered saline (PBS) with 0.05% sodium azide, approx. pH 7.2.

### Molecular Weight:

~ 56 kDa

### Swiss-Prot:

O60496

### Purification&Purity:

The antibody was affinity-purified from rabbit antiserum by affinity-chromatography using epitope-specific immunogen and the purity is > 95% (by SDS-PAGE).

### Applications:

IHC: 1:50~1:200

IF: 1:50~1:200

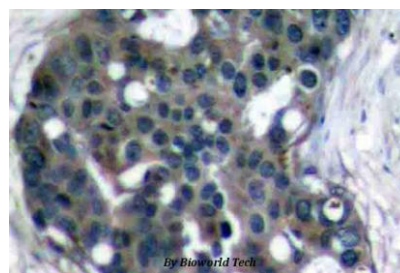
### Storage&Stability:

Store at 4 °C short term. Aliquot and store at -20 °C long term. Avoid freeze-thaw cycles.

### Specificity:

Dok-2 (R293) polyclonal antibody detects endogenous levels of Dok-2 protein.

### DATA:



Immunohistochemistry (IHC) analyzes of Dok-2 (R293) pAb in paraffin-embedded human breast carcinoma tissue.

### Note:

For research use only, not for use in diagnostic procedure.

### Bioworld Technology, Inc.

Add: 1660 South Highway 100, Suite 500 St. Louis Park, MN 55416, USA.

Email: [info@bioworld.com](mailto:info@bioworld.com)

Tel: 6123263284

Fax: 6122933841

### Bioworld technology, co. Ltd.

Add: No 9, weidi road Qixia District Nanjing, 210046, P. R. China.

Email: [info@biogot.com](mailto:info@biogot.com)

Tel: 0086-025-68037686

Fax: 0086-025-68035151