

Histamine H3 Receptor (P326) polyclonal antibody

Catalog: BS2627

Host: Rabbit

Reactivity: Human, Mouse, Rat

BackGround:

Histamine is an inflammatory mediator that is ubiquitously expressed and has a broad range of pharmacologic effects. Specifically, it plays a role in the central nervous, gastrointestinal, respiratory and immune systems. The effects of histamine are mediated by a family of G protein-coupled receptors, the Histamine H1, H2, H3 and H4 Receptors. The gene encoding the human Histamine H3 Receptor is located on chromosome 20 and is expressed as six alternative splice variants in thalamus. These isoforms contain either a deletion in the second transmembrane domain or a variable deletion in the third intracellular loop. The existence of multiple H3 Receptor isoforms suggests that H3-mediated effects may be regulated through alternative splicing mechanisms. The H3 Receptor acts as an autoreceptor in the central nervous system (CNS) and modulates histamine synthesis and release.

Product:

1 mg/ml in Phosphate buffered saline (PBS) with 15 mM sodium azide, approx. pH 7.2.

Molecular Weight:

~ 48 kDa

Swiss-Prot:

Q9Y5N1

Purification&Purity:

The antibody was affinity-purified from rabbit antiserum by affinity-chromatography using epitope-specific immunogen and the purity is > 95% (by SDS-PAGE).

Applications:

IHC: 1:50~1:200

IF: 1:50~1:200

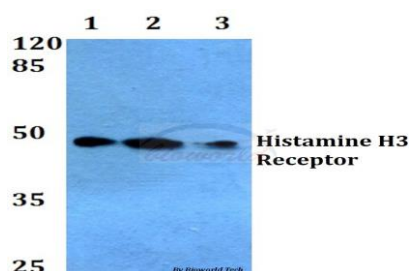
Storage&Stability:

Store at 4 °C short term. Aliquot and store at -20 °C long term. Avoid freeze-thaw cycles.

Specificity:

Histamine H3 Receptor (P326) polyclonal antibody detects endogenous levels of Histamine H3 Receptor protein.

DATA:



Note:

For research use only, not for use in diagnostic procedure.

Bioworld Technology, Inc.

Add: 1660 South Highway 100, Suite 500 St. Louis Park, MN 55416, USA.

Email: info@bioworld.com

Tel: 6123263284

Fax: 6122933841

Bioworld technology, co. Ltd.

Add: No 9, weidi road Qixia District Nanjing, 210046, P. R. China.

Email: info@biogot.com

Tel: 0086-025-68037686

Fax: 0086-025-68035151