

## Galectin-8 (N82) polyclonal antibody

Catalog: BS2541

Host: Rabbit

Reactivity: Human, Mouse

### BackGround:

Several proteins have been identified as specific markers of prostate cancer, and they may be useful as diagnostic indicators. PSA, prostate specific antigen, is the classical indicator for transformed prostate tissue; however, in addition to being upregulated in prostate cancer, PSA is also upregulated in non-malignant conditions, such as benign prostatic hyperplasia prostate. Galectin-8, also known as prostate-specific membrane antigen (PCTA-1), is an additional prostate-specific antigen that is overexpressed only in malignant tumors and therefore is a more specific identifier of malignancies. It is a member of the galectin gene family which mediates both cell-cell and cellmatrix interactions in a manner similar to the selectin subgroup of C-type lectins.

### Product:

1 mg/ml in Phosphate buffered saline (PBS) with 0.05% sodium azide, approx. pH 7.2.

### Molecular Weight:

~ 40 kDa

### Swiss-Prot:

O00214

### Purification&Purity:

The antibody was affinity-purified from rabbit antiserum by affinity-chromatography using epitope-specific immunogen and the purity is > 95% (by SDS-PAGE).

### Applications:

WB: 1:500~1:1000

IHC: 1:50~1:200

IF: 1:50~1:200

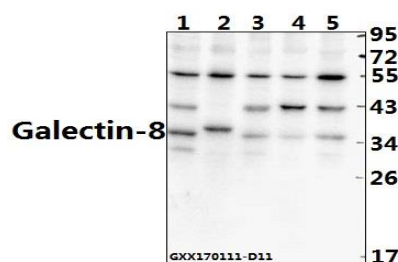
### Storage&Stability:

Store at 4 °C short term. Aliquot and store at -20 °C long term. Avoid freeze-thaw cycles.

### Specificity:

Galectin-8 (N82) polyclonal antibody detects endogenous levels of Galectin-8 protein.

### DATA:



Western blot (WB) analysis of Galectin-8 (N82) polyclonal antibody at 1:500 dilution

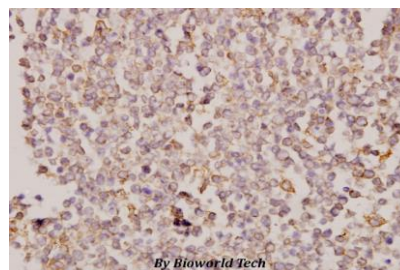
Lane1:H1792 whole cell lysate(40ug)

Lane2:COS-7 whole cell lysate(40ug)

Lane3:SGC7901 whole cell lysate(40ug)

Lane4:PC3 whole cell lysate(40ug)

Lane5:HCT116 whole cell lysate(40ug)



Immunohistochemistry (IHC) analyzes of Galectin-8 (N82) pAb in paraffin-embedded human tonsil carcinoma tissue at 1:50.

### Note:

For research use only, not for use in diagnostic procedure.

### Bioworld Technology, Inc.

Add: 1660 South Highway 100, Suite 500 St. Louis Park, MN 55416, USA.

Email: [info@bioworld.com](mailto:info@bioworld.com)

Tel: 6123263284

Fax: 6122933841

### Bioworld technology, co. Ltd.

Add: No 9, weidi road Qixia District Nanjing, 210046, P. R. China.

Email: [info@biogot.com](mailto:info@biogot.com)

Tel: 0086-025-68037686

Fax: 0086-025-68035151