

## Adducin $\beta$ (E497) polyclonal antibody

Catalog: BS2523

Host: Rabbit

Reactivity: Human, Mouse, Rat

### BackGround:

Adducins are a family of cytoskeleton proteins encoded by three genes ( $\alpha$ ,  $\beta$  and  $\gamma$ ). Adducin is a protein associated with the inner leaflet of the plasma membrane and is one of the proteins localized at the spectrin-actin junction of the membrane skeleton. The cortical actin cytoskeletal network is lost during apoptosis and adducins are central in the cortical actin network organization. Adducin  $\alpha$  is a cytoskeletal protein involved with sodium-pump activity in the renal tubule and is associated with hypertension. The expression of Adducin  $\alpha$  and Adducin  $\gamma$  is ubiquitous in contrast to the restricted expression of Adducin  $\beta$ . Adducin  $\beta$  is expressed at high levels in brain and hematopoietic tissues, such as bone marrow in humans, and spleen in mice.

### Product:

Rabbit IgG, 1mg/ml in PBS with 0.02% sodium azide, 50% glycerol, pH7.2

### Molecular Weight:

~ 110 kDa

### Swiss-Prot:

P35612

### Purification&Purity:

The antibody was affinity-purified from rabbit antiserum by affinity-chromatography using epitope-specific immunogen and the purity is > 95% (by SDS-PAGE).

### Applications:

WB: 1:500~1:1000

IHC: 1:50~1:200

IF: 1:50~1:200

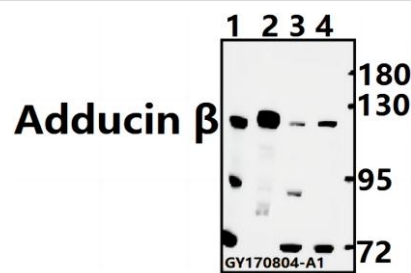
### Storage&Stability:

Store at 4 °C short term. Aliquot and store at -20 °C long term. Avoid freeze-thaw cycles.

### Specificity:

Adducin  $\beta$  (E497) polyclonal antibody detects endogenous levels of Adducin  $\beta$  protein.

### DATA:



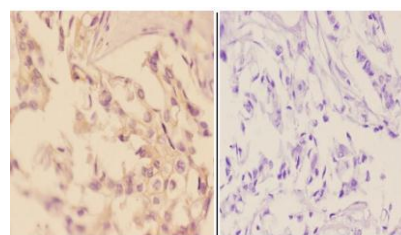
Western blot (WB) analysis of Adducin  $\beta$  (E497) pAb at 1:500 dilution

Lane1:C6 whole cell lysate(40ug)

Lane2:The Brain tissue lysate of Mouse(40ug)

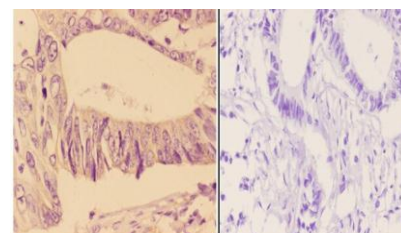
Lane3:U-87MG whole cell lysate(40ug)

Lane4:K562 whole cell lysate(40ug)



BS2523  
Lot CA36131

Immunohistochemistry (IHC) analyzes of Adducin  $\beta$  (E497) pAb in paraffin-embedded human breast carcinoma tissue at 1:50, showing cytoplasm and membrane staining. Negative control (the right) Using PBS instead of primary antibody, secondary antibody is Goat Anti-Rabbit IgG-biotin followed by avidin-peroxidase.



BS2523  
Lot CA36131

Immunohistochemistry (IHC) analyzes of Adducin  $\beta$  (E497) pAb in paraffin-embedded human rectum carcinoma tissue at 1:50, showing cytoplasm and membrane staining. Negative control (the right) Using PBS instead of primary antibody, secondary antibody is Goat Anti-Rabbit

### Bioworld Technology, Inc.

Add: 1660 South Highway 100, Suite 500 St. Louis Park, MN 55416, USA.

Email: [info@bioworld.com](mailto:info@bioworld.com)

Tel: 6123263284

Fax: 6122933841

### Bioworld technology, co. Ltd.

Add: No 9, weidi road Qixia District Nanjing, 210046, P. R. China.

Email: [info@biogot.com](mailto:info@biogot.com)

Tel: 0086-025-68037686

Fax: 0086-025-68035151



## PRODUCT DATA SHEET

Bioworld Technology, Inc.

---

IgG-biotin followed by avidin-peroxidase.

For research use only, not for use in diagnostic procedure.

Note:

---

### Bioworld Technology, Inc.

Add: 1660 South Highway 100, Suite 500 St. Louis Park,  
MN 55416, USA.

Email: [info@bioworld.com](mailto:info@bioworld.com)

Tel: 6123263284

Fax: 6122933841

### Bioworld technology, co. Ltd.

Add: No 9, weidi road Qixia District Nanjing, 210046,  
P. R. China.

Email: [info@biogot.com](mailto:info@biogot.com)

Tel: 0086-025-68037686

Fax: 0086-025-68035151