

ARHGEF2 (P881) polyclonal antibody

Catalog: BS2442

Host: Rabbit

Reactivity: Human, Mouse, Rat

BackGround:

GEFs catalyze the release of GDP from inactive Ras proteins to enable GTP binding. Lfc (also designated Rho/Rac guanine nucleotide exchange factor 2, lymphoid blast crisis-like 1, ARHGEF2, GEF-H1, KIAA0651 or LFP40) is an 894 amino acid GEF for Rho A, a member of the Ras family that regulates the Actin cytoskeleton during the formation of stress fibers. Lfc directly interacts with Cingulin, a junctional adapter that inhibits Rho A, thus preventing phorbol-12-myristate-13-acetate-induced contraction and apoptosis. Mutations in the p53 gene transcriptionally activate Lfc, thereby increasing tumor cell proliferation.

Product:

1 mg/ml in Phosphate buffered saline (PBS) with 0.05% sodium azide, approx. pH 7.2.

Molecular Weight:

~ 110 kDa

Swiss-Prot:

Q92974

Purification&Purity:

The antibody was affinity-purified from rabbit antiserum by affinity-chromatography using epitope-specific immunogen and the purity is > 95% (by SDS-PAGE).

Applications:

WB: 1:500~1:1000

IHC: 1:50~1:200

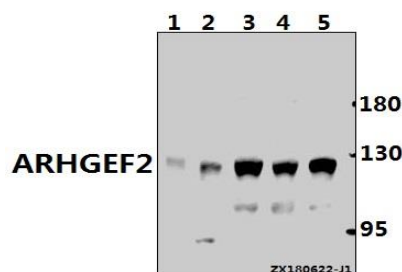
Storage&Stability:

Store at 4 °C short term. Aliquot and store at -20 °C long term. Avoid freeze-thaw cycles.

Specificity:

ARHGEF2 (P881) polyclonal antibody detects endogenous levels of ARHGEF2 protein.

DATA:



Western blot (WB) analysis of ARHGEF2 (P881) pAb at 1:500 dilution

Lane1:PMVEC whole cell lysate(40ug)

Lane2:AML-12 whole cell lysate(40ug)

Lane3:MCF-7 whole cell lysate(40ug)

Lane4:A549 whole cell lysate(40ug)

Lane5:HuT78 whole cell lysate(20ug)

Note:

For research use only, not for use in diagnostic procedure.

Bioworld Technology, Inc.

Add: 1660 South Highway 100, Suite 500 St. Louis Park, MN 55416, USA.

Email: info@bioworld.com

Tel: 6123263284

Fax: 6122933841

Bioworld technology, co. Ltd.

Add: No 9, weidi road Qixia District Nanjing, 210046, P. R. China.

Email: info@biogot.com

Tel: 0086-025-68037686

Fax: 0086-025-68035151