

Cyclin H (E311) polyclonal antibody

Catalog: BS2437

Host: Rabbit

Reactivity: Human, Mouse, Rat

BackGround:

Cyclin H belongs to the highly conserved cyclin family, and are regulators of CDK kinases. Different cyclins exhibit distinct expression and degradation patterns which contribute to the temporal coordination of each mitotic event. Cyclin H forms a complex with CDK7 kinase and ring finger protein MAT1. The kinase complex is able to phosphorylate CDK2 and CDC2 kinases, and thus functions as a CDK-activating kinase (CAK). Cyclin H and its kinase partner are components of TFIIH, as well as RNA polymerase II protein complexes.

Product:

1 mg/ml in Phosphate buffered saline (PBS) with 0.05% sodium azide, approx. pH 7.2.

Molecular Weight:

~ 38 kDa

Swiss-Prot:

P51946

Purification&Purity:

The antibody was affinity-purified from rabbit antiserum by affinity-chromatography using epitope-specific immunogen and the purity is > 95% (by SDS-PAGE).

Applications:

IHC: 1:50~1:200

IF: 1:50~1:200

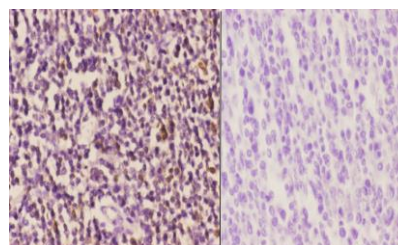
Storage&Stability:

Store at 4 °C short term. Aliquot and store at -20 °C long term. Avoid freeze-thaw cycles.

Specificity:

Cyclin H (E311) polyclonal antibody detects endogenous levels of Cyclin H protein.

DATA:



BS2437
Lot CA36131

Immunohistochemistry (IHC) analyzes of Cyclin H (E311) pAb in paraffin-embedded human tonsil carcinoma tissue at 1:50, showing nucleus staining. Negative control (the right) Using PBS instead of primary antibody, secondary antibody is Goat Anti-Rabbit IgG-biotin followed by avidin-peroxidase.

Note:

For research use only, not for use in diagnostic procedure.

Bioworld Technology, Inc.

Add: 1660 South Highway 100, Suite 500 St. Louis Park, MN 55416, USA.

Email: info@bioworld.com

Tel: 6123263284

Fax: 6122933841

Bioworld technology, co. Ltd.

Add: No 9, weidi road Qixia District Nanjing, 210046, P. R. China.

Email: info@biogot.com

Tel: 0086-025-68037686

Fax: 0086-025-68035151