

## MLH1 (S467) polyclonal antibody

Catalog: BS2418

Host: Rabbit

Reactivity: Human

### BackGround:

MLH1 is an integral part of the protein complex responsible for mismatch repair that is expressed in lymphocytes, heart, colon, breast, lung, spleen, testis, prostate, thyroid and gall bladder and is methylated in several ovarian tumors. Loss of MLH1 protein expression is associated with a mutated phenotype, microsatellite instability and a predisposition to cancer. In hereditary non-polyposis colorectal cancer (HNPCC), an autosomal dominant inherited cancer syndrome that signifies a high risk of colorectal and various other types of cancer, the MLH1 gene exhibits a pathogenic mutation. Certain cancer cell lines, including leukemia CCRF-CEM, colon HCT 116 and KM12, and ovarian cancers SK-OV-3 and IGROV-1, show complete deficiency of MLH1, while MLH1 is expressed in 60% of melanomas, 70% of non-invasive squamous cell carcinomas and 30% of invasive squamous cell carcinomas.

### Product:

1 mg/ml in Phosphate buffered saline (PBS) with 0.05% sodium azide, approx. pH 7.2.

### Molecular Weight:

~ 85 kDa

### Swiss-Prot:

P40692

### Purification&Purity:

The antibody was affinity-purified from rabbit antiserum by affinity-chromatography using epitope-specific immunogen and the purity is > 95% (by SDS-PAGE).

### Applications:

WB: 1:500~1:1000

IF: 1:50~1:200

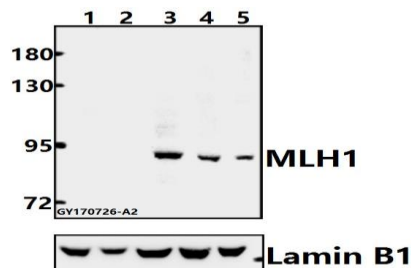
### Storage&Stability:

Store at 4 °C short term. Aliquot and store at -20 °C long term. Avoid freeze-thaw cycles.

### Specificity:

MLH1 (S467) polyclonal antibody detects endogenous levels of MLH1 protein.

### DATA:



Western blot (WB) analysis of MLH1 (S467) pAb at 1:500 dilution

Lane1:PC12 whole cell lysate(40ug)

Lane2:BV2 whole cell lysate(40ug)

Lane3:PC3 whole cell lysate(40ug)

Lane4:A549 whole cell lysate(40ug)

Lane5:MCF-7 whole cell lysate(40ug)

### Note:

For research use only, not for use in diagnostic procedure.

### Bioworld Technology, Inc.

Add: 1660 South Highway 100, Suite 500 St. Louis Park, MN 55416, USA.

Email: [info@bioworld.com](mailto:info@bioworld.com)

Tel: 6123263284

Fax: 6122933841

### Bioworld technology, co. Ltd.

Add: No 9, weidi road Qixia District Nanjing, 210046, P. R. China.

Email: [info@biogot.com](mailto:info@biogot.com)

Tel: 0086-025-68037686

Fax: 0086-025-68035151