

FoxE3 (R97) polyclonal antibody

Catalog: BS2304

Host: Rabbit

Reactivity: Human, Rat

BackGround:

The human forkhead-box (FOX) gene family consists of at least 43 members, including FOXE3, a 288-amino acid protein. FOXE3 is a winged-helix transcription factor that plays a crucial role during the initial stages of lens development and closure of the lens vesicle. FOXE3 may also act as a factor that promotes survival and proliferation while preventing differentiation in the lens epithelium. As the posterior cells of the lens fiber begin to differentiate, expression of FOXE3 is limited to the undifferentiated cells coating the anterior surface of the lens. Congenital primary aphakia (CPA) is a rare developmental disorder caused by a null mutation in the FOXE3 gene that is identified by the absence of a lens. The development of CPA is normally stimulated during the fourth or fifth week of human embryogenesis.

Product:

1 mg/ml in Phosphate buffered saline (PBS) with 0.05% sodium azide, approx. pH 7.2.

Molecular Weight:

~ 33 kDa

Swiss-Prot:

Q13461

Purification&Purity:

The antibody was affinity-purified from rabbit antiserum by affinity-chromatography using epitope-specific immunogen and the purity is > 95% (by SDS-PAGE).

Applications:

IHC: 1:50~1:200

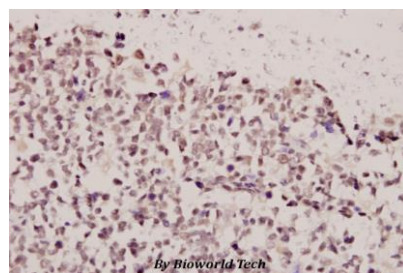
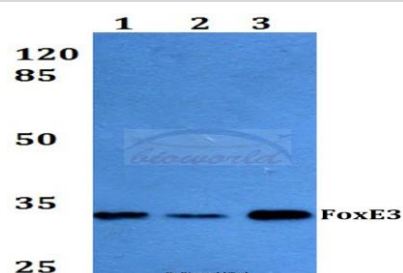
Storage&Stability:

Store at 4 °C short term. Aliquot and store at -20 °C long term. Avoid freeze-thaw cycles.

Specificity:

FoxE3 (R97) polyclonal antibody detects endogenous levels of FoxE3 protein.

DATA:



Immunohistochemistry (IHC) analyzes of FoxE3 (R97) pAb in paraffin-embedded human tonsil carcinoma tissue at 1:50.

Note:

For research use only, not for use in diagnostic procedure.

Bioworld Technology, Inc.

Add: 1660 South Highway 100, Suite 500 St. Louis Park, MN 55416, USA.

Email: info@bioworld.com

Tel: 6123263284

Fax: 6122933841

Bioworld technology, co. Ltd.

Add: No 9, weidi road Qixia District Nanjing, 210046, P. R. China.

Email: info@biogot.com

Tel: 0086-025-68037686

Fax: 0086-025-68035151