

## FoxC1/2 (K138) polyclonal antibody

Catalog: BS2300

Host: Rabbit

Reactivity: Human, Mouse, Rat

### BackGround:

The forkhead transcription factor genes FOXC1 (Mf1) and FOXC2 (Mfh1) interact with the Notch signaling pathway and are required for the pre patterning of anterior and posterior domains in the presumptive somites through a putative Notch/Delta/Mesp regulatory loop. The genes have similar, dose-dependent functions, and compensate for each other in the early development of the heart, blood vessels and somites. Both FOXC1 and FOXC2 are expressed in the mesenchyme from which the ocular drainage structures derive. FOXC1 and FOXC2 also interact in kidney and heart development. Mutations in the FOXC1 gene result in Axenfeld-Rieger malformations of the anterior segment of the eye and lead to an increased susceptibility of glaucoma, including juvenile glaucoma. Functional regions in FOXC1 are required for nuclear localization and transcriptional regulation. Specifically, two regions in the FOXC1 forkhead domain, one rich in basic amino acid residues, and a second, highly conserved among all FOX proteins, are necessary for nuclear localization of the FOXC1 protein.

### Product:

1 mg/ml in Phosphate buffered saline (PBS) with 0.05% sodium azide, approx. pH 7.2.

### Molecular Weight:

~ 57 kDa

### Swiss-Prot:

Q12948/Q99958

### Purification&Purity:

The antibody was affinity-purified from rabbit antiserum by affinity-chromatography using epitope-specific immunogen and the purity is > 95% (by SDS-PAGE).

### Applications:

WB: 1:500~1:1000

IHC: 1:50~1:200

IF: 1:50~1:200

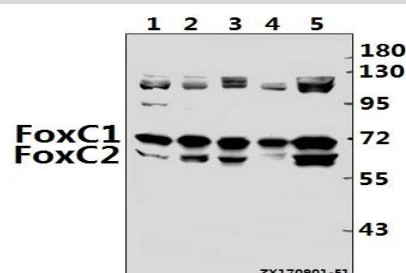
### Storage&Stability:

Store at 4 °C short term. Aliquot and store at -20 °C long term. Avoid freeze-thaw cycles.

### Specificity:

FoxC1/2 (K138) polyclonal antibody detects endogenous levels of FoxC1 and FoxC2 protein.

### DATA:



Western blot (WB) analysis of FoxC1/2 (K138) pAb at 1:500 dilution

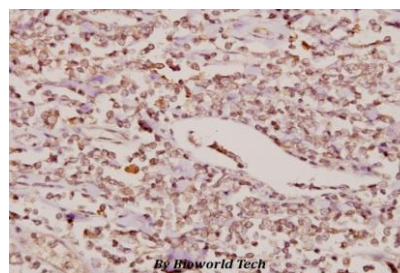
Lane1:3T3-L1 whole cell lysate(40ug)

Lane2:C6 whole cell lysate(40ug)

Lane3:A549 whole cell lysate(40ug)

Lane4:HeLa whole cell lysate(40ug)

Lane5:HEK293T whole cell lysate(40ug)



Immunohistochemistry (IHC) analyzes of FoxC1/2 (K138) pAb in paraffin-embedded human tonsil carcinoma tissue at 1:50.

### Note:

For research use only, not for use in diagnostic procedure.

### Bioworld Technology, Inc.

Add: 1660 South Highway 100, Suite 500 St. Louis Park, MN 55416, USA.

Email: [info@bioworld.com](mailto:info@bioworld.com)

Tel: 6123263284

Fax: 6122933841

### Bioworld technology, co. Ltd.

Add: No 9, weidi road Qixia District Nanjing, 210046, P. R. China.

Email: [info@biogot.com](mailto:info@biogot.com)

Tel: 0086-025-68037686

Fax: 0086-025-68035151



## PRODUCT DATA SHEET

Bioworld Technology, Inc.

---

---

### **Bioworld Technology, Inc.**

Add: 1660 South Highway 100, Suite 500 St. Louis Park,  
MN 55416, USA.

Email: [info@bioworld.com](mailto:info@bioworld.com)

Tel: 6123263284

Fax: 6122933841

### **Bioworld technology, co. Ltd.**

Add: No 9, weidi road Qixia District Nanjing, 210046,  
P. R. China.

Email: [info@biogot.com](mailto:info@biogot.com)

Tel: 0086-025-68037686

Fax: 0086-025-68035151