

CtBP2 (P432) polyclonal antibody

Catalog: BS2287

Host: Rabbit

Reactivity: Human, Mouse, Rat

BackGround:

CtBP1 and the related protein CtBP2 are characterized as C-terminal binding proteins of adenovirus E1A, and they preferentially associate with the E1A via a 5 amino acid motif, PLDLS, to repress E1A induced oncogenesis and cellular transformation. CtBP1 is expressed from embryo to adult, but CtBP2 is mainly expressed during embryogenesis. During skeletal and T cell development, CtBP1 and CtBP2 associate with the PLDLSL domain of deltaEF1, a cellular zinc finger-homeodomain protein, and thereby enhances deltaEF1-induced transcriptional silencing. In addition, CtBP complexes with CtIP, a 125 kDa protein that recognizes distinctly different protein motifs from CtBP. CtIP binds to the BRCT repeats within the breast cancer gene BRCA1 and enables CtBP to influence BRCA1 activity.

Product:

1 mg/ml in Phosphate buffered saline (PBS) with 15 mM sodium azide, approx. pH 7.2.

Molecular Weight:

~48.0 kDa

Swiss-Prot:

P56545

Purification&Purity:

The antibody was affinity-purified from rabbit antiserum by affinity-chromatography using epitope-specific immunogen and the purity is > 95% (by SDS-PAGE).

Applications:

WB: 1:500~1:1000

IHC: 1:50~1:200

IF: 1:50~1:200

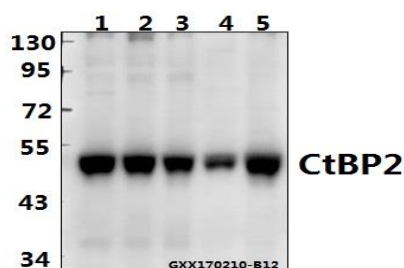
Storage&Stability:

Store at 4 °C short term. Aliquot and store at -20 °C long term. Avoid freeze-thaw cycles.

Specificity:

CtBP2 (P432) polyclonal antibody detects endogenous levels of CtBP2 protein.

DATA:



Western blot (WB) analysis of CtBP2 (P432) polyclonal antibody at 1:500 dilution

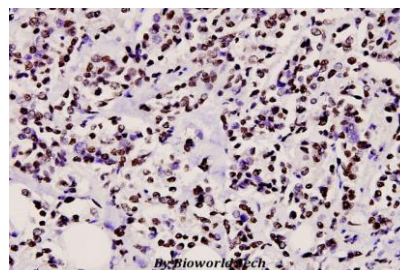
Lane1:PC3 whole cell lysate(40ug)

Lane2:H1792 whole cell lysate(40ug)

Lane3:Panc1 whole cell lysate(40ug)

Lane4:H9C2 whole cell lysate(40ug)

Lane5:AML-12 whole cell lysate(40ug)



Immunohistochemistry (IHC) analyzes of CtBP2 (P432) pAb in paraffin-embedded human breast carcinoma tissue at 1:100.

Note:

For research use only, not for use in diagnostic procedure.

Bioworld Technology, Inc.

Add: 1660 South Highway 100, Suite 500 St. Louis Park, MN 55416, USA.

Email: info@bioworld.com

Tel: 6123263284

Fax: 6122933841

Bioworld technology, co. Ltd.

Add: No 9, weidi road Qixia District Nanjing, 210046, P. R. China.

Email: info@biogot.com

Tel: 0086-025-68037686

Fax: 0086-025-68035151