

ERK1/2 (R172) polyclonal antibody

Catalog: BS2265

Host: Rabbit

Reactivity: Human, Mouse, Rat

BackGround:

Mitogen-activated protein kinase (MAPK) signaling pathways involve two closely related MAP kinases, known as extracellular-signal-related kinase 1 (ERK 1, p44) and 2 (ERK 2, p42). Growth factors, steroid hormones, G protein-coupled receptor ligands, and neurotransmitters can initiate MAPK signaling pathways. Activation of ERK1 and ERK2 requires phosphorylation by upstream kinases such as MAP kinase kinase (MEK), MEK kinase and Raf-1. ERK1 and ERK2 phosphorylation can occur at specific tyrosine and threonine sites mapping within consensus motifs that include the Threonine-Glutamate-Tyrosine motif. ERK activation leads to dimerization with other ERKs and subsequent localization to the nucleus. Active ERK dimers phosphorylate serine and threonine residues on nuclear proteins and influence a host of responses that include proliferation, differentiation, transcription regulation and development.

Product:

1 mg/ml in Phosphate buffered saline (PBS) with 0.05% sodium azide, approx. pH 7.2.

Molecular Weight:

~ 42 kDa

Swiss-Prot:

P28482

Purification&Purity:

The antibody was affinity-purified from rabbit antiserum by affinity-chromatography using epitope-specific immunogen and the purity is > 95% (by SDS-PAGE).

Applications:

WB: 1:500~1:1000

IHC: 1:50~1:200

Storage&Stability:

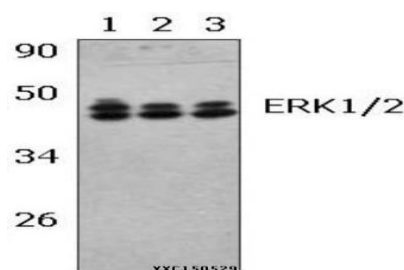
Store at 4 °C short term. Aliquot and store at -20 °C long

term. Avoid freeze-thaw cycles.

Specificity:

ERK 2 (R172) polyclonal antibody detects endogenous levels of ERK 2 protein. This antibody also recognizes ERK1 protein.

DATA:

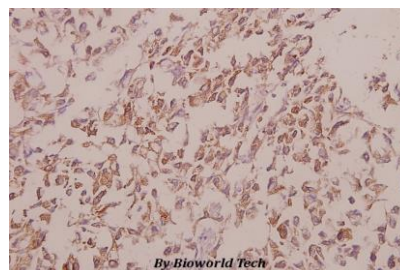


Western blot (WB) analysis of ERK 1/2 (R172) polyclonal antibody at 1:1000 dilution

Lane1:Hela whole cell lysate(40µg)

Lane2:NIH-3T3 whole cell lysate(40µg)

Lane3:H9C2 whole cell lysate(40µg)



Immunohistochemistry (IHC) analyzes of ERK 1/2 (R172) pAb in paraffin-embedded human colorectal carcinoma tissue at 1:50.

Note:

For research use only, not for use in diagnostic procedure.

Bioworld Technology, Inc.

Add: 1660 South Highway 100, Suite 500 St. Louis Park, MN 55416, USA.

Email: info@bioworld.com

Tel: 6123263284

Fax: 6122933841

Bioworld technology, co. Ltd.

Add: No 9, weidi road Qixia District Nanjing, 210046, P. R. China.

Email: info@biogot.com

Tel: 0086-025-68037686

Fax: 0086-025-68035151