

ICAD (Q177) polyclonal antibody

Catalog: BS2229

Host: Rabbit

Reactivity: Human, Mouse, Rat

BackGround:

The CED/ICE family of cysteine proteases plays a pivotal role in mediating apoptosis through the proteolysis of specific targets. Among the targets are poly (ADP-ribose) polymerase (PARP), gelsolin, DFF-45/ICAD and the nuclear lamins. PARP is a 112 kDa nuclear protein that is specifically cleaved by CPP32 and Mch2, but not by ICE, into a signature 85 kDa apoptotic fragment. Gelsolin is cleaved by CPP32 to an active form that severs actin filaments in a Ca^{++} -independent manner. In addition to binding actin, gelsolin can form complexes with fibronectin, which may be important for localizing gelsolin to inflammatory sites. DFF-45/ICAD, the 45 kDa subunit of DNA fragmentation factor, is cleaved by CPP32 to generate an active factor that induces DNA fragmentation. The 70 kDa nuclear Lamin A is cleaved by Mch2, but not CPP32. Nuclear Lamin B is fragmented as a consequence of apoptosis by an unidentified member of the ICE family.

Product:

1 mg/ml in Phosphate buffered saline (PBS) with 0.05% sodium azide, approx. pH 7.2.

Molecular Weight:

~ 36 kDa

Swiss-Prot:

O00273

Purification&Purity:

The antibody was affinity-purified from rabbit antiserum by affinity-chromatography using epitope-specific immunogen and the purity is > 95% (by SDS-PAGE).

Applications:

WB: 1:500~1:1000

IHC: 1:50~1:200

IF: 1:50~1:200

Storage&Stability:

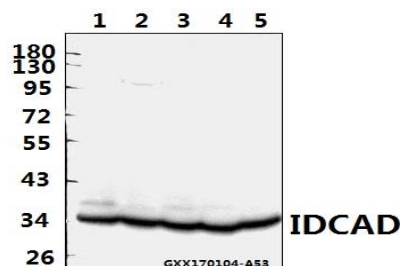
Store at 4 °C short term. Aliquot and store at -20 °C long

term. Avoid freeze-thaw cycles.

Specificity:

ICAD (Q177) polyclonal antibody detects endogenous levels of ICAD protein.

DATA:



Western blot (WB) analysis of ICAD (Q177) polyclonal antibody at 1:500 dilution

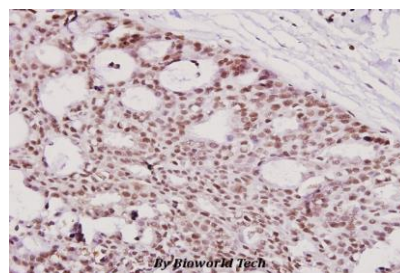
Lane1:C6 whole cell lysate(40ug)

Lane2:CT26 whole cell lysate(40ug)

Lane3:HCT116 whole cell lysate(40ug)

Lane4:COS-7 whole cell lysate(40ug)

Lane5:SGC7901 whole cell lysate(40ug)



Immunohistochemistry (IHC) analyzes of ICAD (Q177) pAb in paraffin-embedded human breast carcinoma tissue at 1:100.

Note:

For research use only, not for use in diagnostic procedure.

Bioworld Technology, Inc.

Add: 1660 South Highway 100, Suite 500 St. Louis Park, MN 55416, USA.

Email: info@bioworld.com

Tel: 6123263284

Fax: 6122933841

Bioworld technology, co. Ltd.

Add: No 9, weidi road Qixia District Nanjing, 210046, P. R. China.

Email: info@biogot.com

Tel: 0086-025-68037686

Fax: 0086-025-68035151



PRODUCT DATA SHEET

Bioworld Technology, Inc.

Bioworld Technology, Inc.

Add: 1660 South Highway 100, Suite 500 St. Louis Park,
MN 55416, USA.

Email: info@bioworld.com

Tel: 6123263284

Fax: 6122933841

Bioworld technology, co. Ltd.

Add: No 9, weidi road Qixia District Nanjing, 210046,
P. R. China.

Email: info@biogot.com

Tel: 0086-025-68037686

Fax: 0086-025-68035151