

Adducin γ (P452) polyclonal antibody

Catalog: BS2209

Host: Rabbit

Reactivity: Human, Mouse, Rat

BackGround:

Adducins are a family of cytoskeleton proteins encoded by three genes (α , β and γ). Adducin is a protein associated with the inner leaflet of the plasma membrane and is one of the proteins localized at the spectrin-actin junction of the membrane skeleton. The cortical actin cytoskeletal network is lost during apoptosis and adducins are central in the cortical actin network organization. Adducin α is a cytoskeletal protein involved with sodium-pump activity in the renal tubule and is associated with hypertension. The expression of Adducin α and Adducin γ is ubiquitous in contrast to the restricted expression of Adducin β . Adducin β is expressed at high levels in brain and hematopoietic tissues, such as bone marrow in humans, and spleen in mice.

Product:

1 mg/ml in Phosphate buffered saline (PBS) with 15 mM sodium azide, approx. pH 7.2.

Molecular Weight:

~ 82 kDa

Swiss-Prot:

Q9UEY8

Purification&Purity:

The antibody was affinity-purified from rabbit antiserum by affinity-chromatography using epitope-specific immunogen and the purity is > 95% (by SDS-PAGE).

Applications:

WB: 1:500~1:1000

IHC: 1:50~1:200

IF: 1:50~1:200

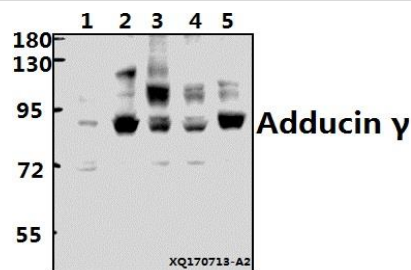
Storage&Stability:

Store at 4 °C short term. Aliquot and store at -20 °C long term. Avoid freeze-thaw cycles.

Specificity:

Adducin γ (P452) polyclonal antibody detects endogenous levels of Adducin γ protein.

DATA:



Western blot (WB) analysis of Adducin γ (P452) polyclonal antibody at 1:500 dilution

Lane1:BV2 whole cell lysate(40ug)

Lane2:PC12 whole cell lysate(40ug)

Lane3:LO2 whole cell lysate(40ug)

Lane4:A549 whole cell lysate(40ug)

Lane5:HepG2 whole cell lysate(40ug)

Note:

For research use only, not for use in diagnostic procedure.

Bioworld Technology, Inc.

Add: 1660 South Highway 100, Suite 500 St. Louis Park, MN 55416, USA.

Email: info@bioworld.com

Tel: 6123263284

Fax: 6122933841

Bioworld technology, co. Ltd.

Add: No 9, weidi road Qixia District Nanjing, 210046, P. R. China.

Email: info@biogot.com

Tel: 0086-025-68037686

Fax: 0086-025-68035151