

CYP2C8/9/18/19 (M136) polyclonal antibody

Catalog: BS2195

Host: Rabbit

Reactivity: Human, Mouse, Rat

BackGround:

The cytochrome P450 proteins are monooxygenases that catalyze many reactions involved in drug metabolism and synthesis of cholesterol, steroids and other lipids. The CYP2C (CYPIIC) subfamily comprises a group of constitutively expressed genes, some phenobarbital-induced genes, and several genes associated with sex-specific expression. Originally, at least 7 genes were assigned to the CYP2C subfamily, which maps to human 10q24.1-q24.3 and mouse chromosome 19. Humans contain fewer genes in this cluster than do mice or rats. Four genes are arranged in the following order and orientation along human chromosome 10: RBP4, CYP2C18, CYP2C19/CYP2C9, and CYP2C8. The previously identified CYP2C10 is an artifact of CYP2C9 and not a distinct isoform. All of the CYP2C proteins localize to the endoplasmic reticulum.

Product:

1 mg/ml in Phosphate buffered saline (PBS) with 0.05% sodium azide, approx. pH 7.2.

Molecular Weight:

~ 60 kDa

Swiss-Prot:

P33260/P10632/P11712/P33261

Purification&Purity:

The antibody was affinity-purified from rabbit antiserum by affinity-chromatography using epitope-specific immunogen and the purity is > 95% (by SDS-PAGE).

Applications:

IHC: 1:50~1:200

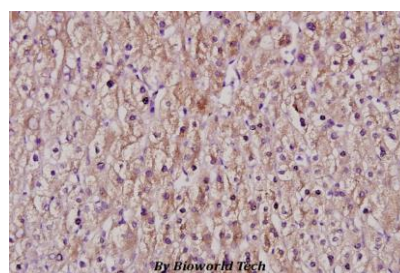
IF: 1:50~1:200

Storage&Stability:

Store at 4 °C short term. Aliquot and store at -20 °C long term. Avoid freeze-thaw cycles.

Specificity:

CYP2C8/9/18/19 (M136) polyclonal antibody detects endogenous levels of CYP2C8/9/18/19 protein.

DATA:

Immunohistochemistry (IHC) analyzes of CYP2C8/9/18/19 (M136) pAb in paraffin-embedded liver cancer tissue at 1:100.

Note:

For research use only, not for use in diagnostic procedure.

Bioworld Technology, Inc.

Add: 1660 South Highway 100, Suite 500 St. Louis Park, MN 55416, USA.

Email: info@bioworld.com

Tel: 6123263284

Fax: 6122933841

Bioworld technology, co. Ltd.

Add: No 9, weidi road Qixia District Nanjing, 210046, P. R. China.

Email: info@biogot.com

Tel: 0086-025-68037686

Fax: 0086-025-68035151