

## CYP27A1 (E131) polyclonal antibody

Catalog: BS2192

Host: Rabbit

Reactivity: Human, Mouse, Rat

### BackGround:

CYP27A1 participates in the degradation of cholesterol to bile acids in both the classic and acidic pathways.[1] It is the initiating enzyme in the acidic pathway to bile acids, yielding oxysterols by introducing a hydroxyl group to the carbon at the 27 position in cholesterol. In the acidic pathway, it produces 27-hydroxycholesterol from cholesterol whereas in the classic or neutral pathway, it produces 3 $\beta$ -hydroxy-5-cholestenoic acid. It is also involved in the metabolism of vitamin D3. While CYP27A1 is present in many different tissues, its function in these tissues is largely uncharacterized. In macrophages, 27-hydroxycholesterol generated by this enzyme may be helpful against the production of inflammatory factors associated with cardiovascular disease.

### Product:

1 mg/ml in Phosphate buffered saline (PBS) with 0.05% sodium azide, approx. pH 7.2.

### Molecular Weight:

~ 60 kDa

### Swiss-Prot:

Q02318

### Purification&Purity:

The antibody was affinity-purified from rabbit antiserum by affinity-chromatography using epitope-specific immunogen and the purity is > 95% (by SDS-PAGE).

### Applications:

WB: 1:500~1:1000

IHC: 1:50~1:200

IF: 1:50~1:200

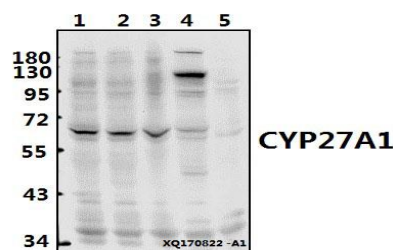
### Storage&Stability:

Store at 4 °C short term. Aliquot and store at -20 °C long term. Avoid freeze-thaw cycles.

### Specificity:

CYP27A1 (E131) polyclonal antibody detects endogenous levels of CYP27A1 protein

### DATA:



Western blot (WB) analysis of CYP27A1 (E131) pAb at 1:500 dilution

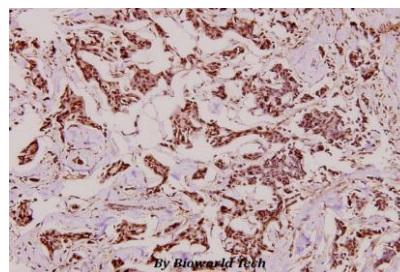
Lane1: LO2 whole cell lysate(40ug)

Lane2: HepG2 whole cell lysate(40ug)

Lane3: A549 whole cell lysate(40ug)

Lane4: PC12 whole cell lysate(40ug)

Lane5: AML-12 whole cell lysate(40ug)



Immunohistochemistry (IHC) analyzes of CYP27A1 (E131) pAb in paraffin-embedded human breast carcinoma tissue at 1:100.

### Note:

For research use only, not for use in diagnostic procedure.

### Bioworld Technology, Inc.

Add: 1660 South Highway 100, Suite 500 St. Louis Park, MN 55416, USA.

Email: [info@bioworld.com](mailto:info@bioworld.com)

Tel: 6123263284

Fax: 6122933841

### Bioworld technology, co. Ltd.

Add: No 9, weidi road Qixia District Nanjing, 210046, P. R. China.

Email: [info@biogot.com](mailto:info@biogot.com)

Tel: 0086-025-68037686

Fax: 0086-025-68035151