

DNA pol λ (R478) polyclonal antibody

Catalog: BS2159

Host: Rabbit

Reactivity: Human, Rat

BackGround:

DNA replication, recombination and repair, all of which are necessary for genomic stability, require the presence of exonucleases. In DNA replication, these enzymes are involved in the processing of Okazaki fragments, whereas in DNA repair, they function to excise damaged DNA fragments and correct recombinational mismatches. These exonucleases include the family of DNA polymerases. DNA pol α , β , δ , and ϵ are involved in DNA replication and repair. DNA pol δ and DNA pol ϵ are multisubunit enzymes, with DNA pol δ consisting of two subunits: p125, which interacts with the sliding DNA clamp protein PCNA; and p50. The nuclear-encoded DNA pol γ is the only DNA polymerase required for the replication of the mitochondrial DNA. DNA pol ζ is ubiquitously expressed in various tissues and mediates the cellular mechanism of damage induced mutagenesis. DNA pol θ is a DNA polymerasehelicase that binds ATP and is involved in the repair of interstrand crosslinks.

Product:

1 mg/ml in Phosphate buffered saline (PBS) with 0.05% sodium azide, approx. pH 7.3.

Molecular Weight:

~ 64 kDa

Swiss-Prot:

Q9UGP5

Purification&Purity:

The antibody was affinity-purified from rabbit antiserum by affinity-chromatography using epitope-specific im-

munogen and the purity is > 95% (by SDS-PAGE).

Applications:

WB: 1:500~1:1000

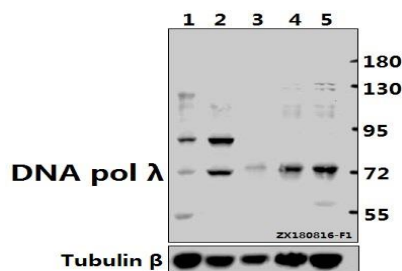
Storage&Stability:

Store at 4 °C short term. Aliquot and store at -20 °C long term. Avoid freeze-thaw cycles.

Specificity:

DNA pol λ (R478) pAb detects endogenous levels of DNA pol λ protein.

DATA:



Western blot (WB) analysis of DNA pol λ (R478) pAb at 1:500 dilution

Lane1:C6 whole cell lysate(40ug)

Lane2:HeLa whole cell lysate(40ug)

Lane3:PC3 whole cell lysate(40ug)

Lane4:A549 whole cell lysate(40ug)

Lane5:A2780 whole cell lysate(40ug)

Note:

For research use only, not for use in diagnostic procedure.

Bioworld Technology, Inc.

Add: 1660 South Highway 100, Suite 500 St. Louis Park, MN 55416, USA.

Email: info@bioworld.com

Tel: 6123263284

Fax: 6122933841

Bioworld technology, co. Ltd.

Add: No 9, weidi road Qixia District Nanjing, 210046, P. R. China.

Email: info@biogol.com

Tel: 0086-025-68037686

Fax: 0086-025-68035151