

## BAF170 (M388) polyclonal antibody

Catalog: BS2101

Host: Rabbit

Reactivity: Human, Mouse, Rat

### BackGround:

The SWI/SNF complex is involved in the activation of transcription via the remodeling of nucleosome structure in an ATP-dependent manner. Brm (also designated SNF1 or SNF2 $\alpha$ ) and Brg-1 (also designated SNF2 or SNF2 $\beta$ ) are the ATPase subunits of the mammalian SWI/SNF complex. Brm, Brg-1, Ini1 (integrase interactor 1, also designated SNF5), BAF155 (also designated SRG3) and BAF170 are thought to comprise the functional core of the SWI/SNF complex. Addition of Ini1, BAF155 and BAF170 to Brg-1 appears to increase remodeling activity. Other complex subunits are thought to play regulatory roles. hSNF2L and hSNF2H both appear to be homologs of Drosophila ISWI, a Brm related ATPase that is present in chromatin remodeling complexes other than SWI/SNF, including the NURF (nucleosome remodeling factor).

### Product:

1 mg/ml in Phosphate buffered saline (PBS) with 0.05% sodium azide, approx. pH 7.2.

### Molecular Weight:

~ 170 kDa

### Swiss-Prot:

Q8TAQ2

### Purification&Purity:

The antibody was affinity-purified from rabbit antiserum by affinity-chromatography using epitope-specific immunogen and the purity is > 95% (by SDS-PAGE).

### Applications:

WB: 1:500~1:1000

IHC: 1:50~1:200

IF: 1:50~1:200

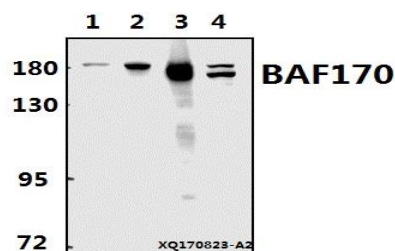
### Storage&Stability:

Store at 4 °C short term. Aliquot and store at -20 °C long term. Avoid freeze-thaw cycles.

### Specificity:

BAF170 (M388) polyclonal antibody detects endogenous levels of BAF170 protein.

### DATA:



Western blot (WB) analysis of BAF170 (M388) pAb at 1:1000 dilution

Lane1:K562 whole cell lysate(40ug)

Lane2:A549 whole cell lysate(40ug)

Lane3:C6 whole cell lysate(40ug)

Lane4:3T3-L1 whole cell lysate(40ug)

### Note:

For research use only, not for use in diagnostic procedure.

### Bioworld Technology, Inc.

Add: 1660 South Highway 100, Suite 500 St. Louis Park, MN 55416, USA.

Email: [info@bioworld.com](mailto:info@bioworld.com)

Tel: 6123263284

Fax: 6122933841

### Bioworld technology, co. Ltd.

Add: No 9, weidi road Qixia District Nanjing, 210046, P. R. China.

Email: [info@biogot.com](mailto:info@biogot.com)

Tel: 0086-025-68037686

Fax: 0086-025-68035151