

## EphA7 (E477) polyclonal antibody

Catalog: BS2067

Host: Rabbit

Reactivity: Human, Mouse, Rat

### BackGround:

EphAs are a family of receptor tyrosine kinases that are involved in axonal guidance during development. These receptors and their ligands, the ephrins, act via repulsive mechanisms to guide growing axons towards their appropriate targets and allow for the correct developmental connections to be made. Ligand binding to an Eph receptor results in tyrosine phosphorylation of the kinase domain, and repulsion of axonal growth cones and migrating cells. Three different EphA7 splice variants, a full-length form and two truncated versions lacking kinase domains, are expressed in the neural folds.

### Product:

1 mg/ml in Phosphate buffered saline (PBS) with 0.05% sodium azide, approx. pH 7.2.

### Molecular Weight:

~ 112 kDa

### Swiss-Prot:

Q15375

### Purification&Purity:

The antibody was affinity-purified from rabbit antiserum by affinity-chromatography using epitope-specific immunogen and the purity is > 95% (by SDS-PAGE).

### Applications:

WB: 1:500~1:1000

IHC: 1:50~1:200

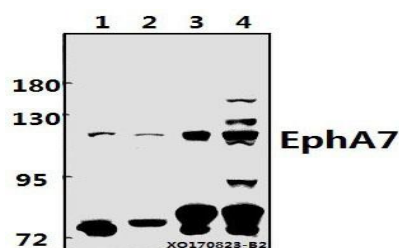
### Storage&Stability:

Store at 4 °C short term. Aliquot and store at -20 °C long term. Avoid freeze-thaw cycles.

### Specificity:

EphA7 (E477) polyclonal antibody detects endogenous levels of EphA7 protein.

### DATA:



Western blot (WB) analysis of EphA7 (E477) pAb at 1:500 dilution

Lane1:3T3-L1 whole cell lysate(40ug)

Lane2:H9C2 whole cell lysate(40ug)

Lane3:A549 whole cell lysate(40ug)

Lane4:HEK293T whole cell lysate(40ug)

### Note:

For research use only, not for use in diagnostic procedure.

### Bioworld Technology, Inc.

Add: 1660 South Highway 100, Suite 500 St. Louis Park, MN 55416, USA.

Email: [info@bioworld.com](mailto:info@bioworld.com)

Tel: 6123263284

Fax: 6122933841

### Bioworld technology, co. Ltd.

Add: No 9, weidi road Qixia District Nanjing, 210046, P. R. China.

Email: [info@biogol.com](mailto:info@biogol.com)

Tel: 0086-025-68037686

Fax: 0086-025-68035151