

CLK2 (R15) polyclonal antibody

Catalog: BS2005

Host: Rabbit

Reactivity: Human, Mouse, Rat

BackGround:

CLK2 (CDC-like kinase 2) is a 499 amino acid nuclear protein that contains one protein kinase domain and belongs to the Ser/Thr protein kinase family. Using ATP, CLK2 phosphorylates serine- and arginine-rich (SR) components of the spliceosomal complex, possibly playing a role in the control of RNA splicing. CLK2 exists as two alternatively spliced isoforms, designated short and long, and is encoded by a gene which maps to human chromosome 1.

Product:

1 mg/ml in Phosphate buffered saline (PBS) with 0.05% sodium azide, approx. pH 7.2.

Molecular Weight:

~ 60 kDa

Swiss-Prot:

P49760

Purification&Purity:

The antibody was affinity-purified from rabbit antiserum by affinity-chromatography using epitope-specific immunogen and the purity is > 95% (by SDS-PAGE).

Applications:

WB: 1:500~1:1000

IHC: 1:50~1:200

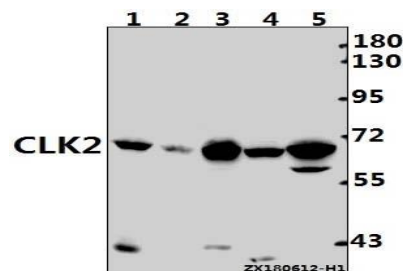
Storage&Stability:

Store at 4 °C short term. Aliquot and store at -20 °C long term. Avoid freeze-thaw cycles.

Specificity:

CLK2 (R15) polyclonal antibody detects endogenous levels of CLK2 protein.

DATA:



Western blot (WB) analysis of CLK2 (R15) pAb at 1:500 dilution

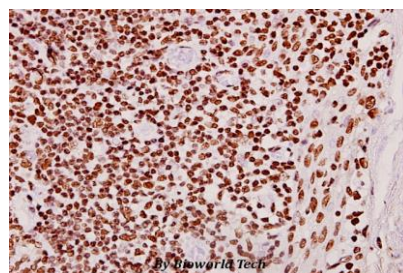
Lane1:C6 whole cell lysate(40ug)

Lane2:3T3-L1 whole cell lysate(40ug)

Lane3:HuT78 whole cell lysate(40ug)

Lane4:Hela whole cell lysate(30ug)

Lane5:A375 whole cell lysate(40ug)



Immunohistochemistry (IHC) analyzes of CLK2 (R15) pAb in paraffin-embedded human tonsil carcinoma tissue at 1:50.

Note:

For research use only, not for use in diagnostic procedure.

Bioworld Technology, Inc.

Add: 1660 South Highway 100, Suite 500 St. Louis Park, MN 55416, USA.

Email: info@bioworld.com

Tel: 6123263284

Fax: 6122933841

Bioworld technology, co. Ltd.

Add: No 9, weidi road Qixia District Nanjing, 210046, P. R. China.

Email: info@biogot.com

Tel: 0086-025-68037686

Fax: 0086-025-68035151