

## Ephrin-A1 (K98) polyclonal antibody

Catalog: BS1950

Host: Rabbit

Reactivity: Human, Mouse, Rat

### BackGround:

The Eph subfamily represents the largest group of receptor protein kinases identified to date. There is increasing evidence that Eph family members are involved in central nervous system function and in development. Ligands for Eph receptors include ephrin-A1 (LERK-1/B61), identified as a ligand for the EphA2 (Eck) receptor; ephrin-A2 (ELF-1), identified as a ligand for the EphA3 and EphA4 (Sek) receptors; ephrin-A3 (LERK-3), identified as a ligand for EphA5 (Ehk1) and EphA3 (Hek) receptors; ephrin-A4 (LERK-4), identified as a ligand for the EphA3 receptor; ephrin-A5 (AL-1), identified as a ligand for EphA5 (REK7); ephrin-B1 (LERK-2), identified as a ligand for the EphB1 (Elk) and EphB2 (Cek5) receptors; ephrin-B2 (LERK-5), identified as a ligand for the EphB1, EphB3 (Cek10) and EphB2 receptors; and ephrin-B3 (LERK-8), identified as a ligand for EphB1.

### Product:

1 mg/ml in Phosphate buffered saline (PBS) with 15 mM sodium azide, approx. pH 7.2.

### Molecular Weight:

~ 23 kDa

### Swiss-Prot:

P20827

### Purification&Purity:

The antibody was affinity-purified from rabbit antiserum by affinity-chromatography using epitope-specific immunogen and the purity is > 95% (by SDS-PAGE).

### Applications:

WB: 1:500~1:1000

IHC: 1:50~1:200

IF: 1:50~1:200

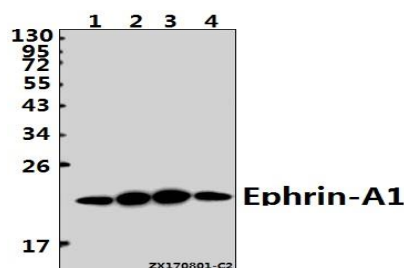
### Storage&Stability:

Store at 4 °C short term. Aliquot and store at -20 °C long term. Avoid freeze-thaw cycles.

### Specificity:

Ephrin-A1 (K98) polyclonal antibody detects endogenous levels of Ephrin-A1 protein.

### DATA:



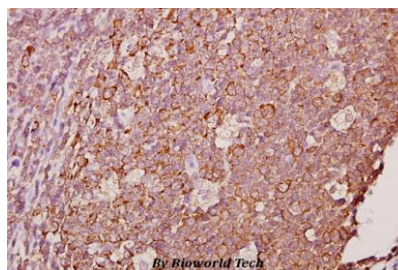
Western blot (WB) analysis of Ephrin-A1 (K98) pAb at 1:500 dilution

Lane1:U-87MG whole cell lysate(40ug)

Lane2:MCF-7 whole cell lysate(40ug)

Lane3:C6 whole cell lysate(40ug)

Lane4:CT26 whole cell lysate(40ug)



Immunohistochemistry (IHC) analyzes of Ephrin-A1 (K98) pAb in paraffin-embedded human tonsil carcinoma tissue at 1:50.

### Note:

For research use only, not for use in diagnostic procedure.

### Bioworld Technology, Inc.

Add: 1660 South Highway 100, Suite 500 St. Louis Park, MN 55416, USA.

Email: [info@bioworld.com](mailto:info@bioworld.com)

Tel: 6123263284

Fax: 6122933841

### Bioworld technology, co. Ltd.

Add: No 9, weidi road Qixia District Nanjing, 210046, P. R. China.

Email: [info@biogot.com](mailto:info@biogot.com)

Tel: 0086-025-68037686

Fax: 0086-025-68035151