

## ATF1 (T209) polyclonal antibody

Catalog: BS1946

Host: Rabbit

Reactivity: Human, Mouse, Rat

### BackGround:

Eukaryotic gene transcription is regulated by sequence-specific transcription factors that bind modular cis acting promoter and enhancer elements. The ATF/ CREB transcription factor family binds the palindromic cAMP response element (CRE) octanucleotide TGACGTC A. The ATF/CREB family includes CREB-1, CREB-2 (also designated ATF-4), ATF-1, ATF-2 and ATF-3. This family of proteins contain highly divergent N-terminal domains, but share a C-terminal leucine zipper for dimerization and DNA binding. ATF-1 is shown to play a key role in the induction of NOX1, this protein binds the cAMP response element (CRE) and mediates PKA-induced stimulation of CRE-reporter genes. ATF-2 forms homodimers and heterodimers with c-Jun to initiate CREdependent transcription. Phosphorylation of ATF-2 at Thr 69 and Thr 71 by stress-activated kinases is necessary for transcriptional activation. Myc also induces phosphorylation of ATF-2 at Thr 69 and Thr 71 to prolong the half-life of ATF-2. ATF-2 functions as a histone acetyltransferase (HAT) and acetylates Histones H2B and H4 specifically in vitro.

### Product:

1 mg/ml in Phosphate buffered saline (PBS) with 0.05% sodium azide, approx. pH 7.2.

### Molecular Weight:

~ 29, 36 kDa

### Swiss-Prot:

P18846

### Purification&Purity:

The antibody was affinity-purified from rabbit antiserum by affinity-chromatography using epitope-specific immunogen and the purity is > 95% (by SDS-PAGE).

### Applications:

IHC: 1:50~1:200

IF: 1:50~1:200

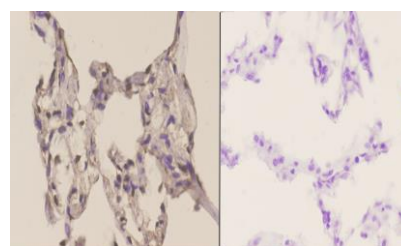
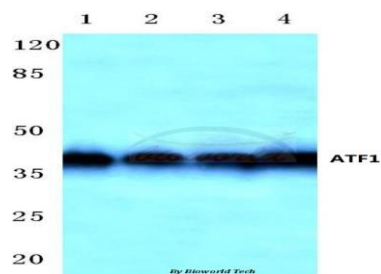
### Storage&Stability:

Store at 4 °C short term. Aliquot and store at -20 °C long term. Avoid freeze-thaw cycles.

### Specificity:

ATF1 (T209) polyclonal antibody detects endogenous levels of ATF1 protein.

### DATA:



BS1946  
Lot C296131

Immunohistochemistry (IHC) analyzes of ATF1 (T209) pAb in paraffin-embedded human lung carcinoma tissue at 1:50. showing nucleus staining. Negative control (the right) Using PBS instead of primary antibody, secondary antibody is Goat Anti-Rabbit IgG-biotin followed by avidin-peroxidase.

### Note:

For research use only, not for use in diagnostic procedure.

### Bioworld Technology, Inc.

Add: 1660 South Highway 100, Suite 500 St. Louis Park, MN 55416, USA.

Email: [info@bioworld.com](mailto:info@bioworld.com)

Tel: 6123263284

Fax: 6122933841

### Bioworld technology, co. Ltd.

Add: No 9, weidi road Qixia District Nanjing, 210046, P. R. China.

Email: [info@biogot.com](mailto:info@biogot.com)

Tel: 0086-025-68037686

Fax: 0086-025-68035151