

EAR2 (S40) polyclonal antibody

Catalog: BS1925

Host: Rabbit

Reactivity: Human, Mouse, Rat

BackGround:

EAR2 (v-erb-a avian erythroblastic leukemia viral oncogene homolog-like 2) protein binds a cis enhancer element (TGACCT motif) upstream of the rennin gene and represses renin gene transcription. EAR2 also contributes to gonadotropin-dependent derepression of LHR promoter activity in granulosa cells. EAR2 mRNA is abundant in the liver, and EAR2 protein localizes to the nucleus of As4.1 cells.

Product:

1 mg/ml in Phosphate buffered saline (PBS) with 0.05% sodium azide, approx. pH 7.2.

Molecular Weight:

~ 42 kDa

Swiss-Prot:

P10588

Purification&Purity:

The antibody was affinity-purified from rabbit antiserum by affinity-chromatography using epitope-specific immunogen and the purity is > 95% (by SDS-PAGE).

Applications:

WB: 1:500~1:1000

IHC: 1:50~1:200

IF: 1:50~1:200

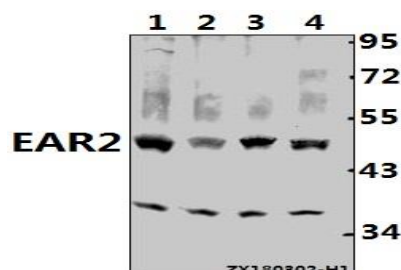
Storage&Stability:

Store at 4 °C short term. Aliquot and store at -20 °C long term. Avoid freeze-thaw cycles.

Specificity:

EAR2 (S40) polyclonal antibody detects endogenous levels of EAR2 protein.

DATA:



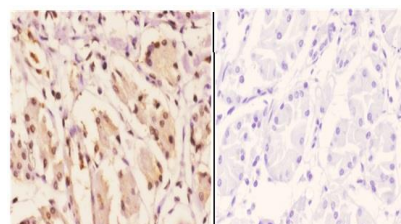
Western blot (WB) analysis of EAR2 (S40) pAb at 1:500 dilution

Lane1:PC12 whole cell lysate(40ug)

Lane2:AML-12 whole cell lysate(40ug)

Lane3:HEK293T whole cell lysate(40ug)

Lane4:HepG2 whole cell lysate(40ug)



BS1925
Lot C136131

Immunohistochemistry (IHC) analyzes of EAR2 (S40) pAb in paraffin-embedded human stomach carcinoma tissue at 1:50. showing Nucleus staining. Negative control (the right) Using PBS instead of primary antibody, secondary antibody is Goat Anti-Rabbit IgG-biotin followed by avidin-peroxidase.

Note:

For research use only, not for use in diagnostic procedure.

Bioworld Technology, Inc.

Add: 1660 South Highway 100, Suite 500 St. Louis Park, MN 55416, USA.

Email: info@bioworld.com

Tel: 6123263284

Fax: 6122933841

Bioworld technology, co. Ltd.

Add: No 9, weidi road Qixia District Nanjing, 210046, P. R. China.

Email: info@biogot.com

Tel: 0086-025-68037686

Fax: 0086-025-68035151