

Aldolase A (T9) polyclonal antibody

Catalog: BS1912

Host: Rabbit

Reactivity: Human, Mouse, Rat

Background:

Fructose 1,6-bisphosphate aldolase catalyses the reversible condensation of glycero-P and glyceraldehyde 3-phosphate into fructose 1,6-bisphosphate. Fructose 1,6-bisphosphate aldolase exists as three forms: the muscle-specific Aldolase A, the liver-specific Aldolase B, and the brain-specific Aldolase C. Aldolase A, B and C arose from a common ancestral gene from which Aldolase B first diverged. Aldolase A is one of the most highly-conserved enzymes known, with only about 2% of the residues changing per 100 million years. Aldolase B is regulated by the hormones insulin and glucagon, and has been implicated in hereditary fructose intolerance disease. Aldolase C is a polypeptide that is exclusively expressed in Purkinje cells. Aldolase C-positive Purkinje cells are organized in the cerebellum as stripes or bands that run from anterior to posterior across the cerebellum and alternate with bands of Aldolase C-negative Purkinje cells.

Product:

Rabbit IgG, 1mg/ml in PBS with 0.02% sodium azide, 50% glycerol, pH7.2

Molecular Weight:

~ 40 kDa

Swiss-Prot:

P04075

Purification&Purity:

The antibody was affinity-purified from rabbit antiserum by affinity-chromatography using epitope-specific immunogen and the purity is > 95% (by SDS-PAGE).

Applications:

WB: 1:500~1:1000

IHC: 1:50~1:200

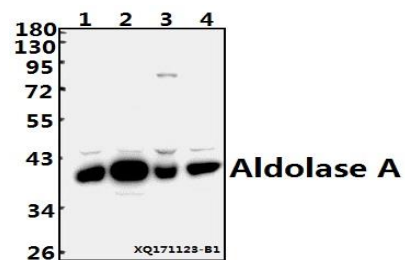
Storage&Stability:

Store at 4 °C short term. Aliquot and store at -20 °C long term. Avoid freeze-thaw cycles.

Specificity:

Aldolase A (T9) polyclonal antibody detects endogenous levels of Aldolase A protein.

DATA:



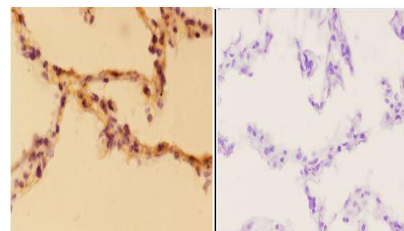
Western blot (WB) analysis of Aldolase A (T9) pAb at 1:500 dilution

Lane1:A549 whole cell lysate(40ug)

Lane2:U-87MG whole cell lysate(40ug)

Lane3:AML-12 whole cell lysate(40ug)

Lane4:PC3 whole cell lysate(40ug)



BS1912
Lot: C136131

Immunohistochemistry (IHC) analyzes of Aldolase A (T9) pAb in paraffin-embedded human lung carcinoma tissue at 1:50, showing cytoplasmic and nuclear staining. Negative control (the right) Using PBS instead of primary antibody, secondary antibody is Goat Anti-Rabbit IgG-biotin followed by avidin-peroxidase.

Note:

For research use only, not for use in diagnostic procedure.

Bioworld Technology, Inc.

Add: 1660 South Highway 100, Suite 500 St. Louis Park, MN 55416, USA.

Email: info@bioworld.com

Tel: 6123263284

Fax: 6122933841

Bioworld technology, co. Ltd.

Add: No 9, weidi road Qixia District Nanjing, 210046, P. R. China.

Email: info@biogot.com

Tel: 0086-025-68037686

Fax: 0086-025-68035151



PRODUCT DATA SHEET

Bioworld Technology, Inc.

Bioworld Technology, Inc.

Add: 1660 South Highway 100, Suite 500 St. Louis Park,
MN 55416, USA.

Email: info@bioworld.com

Tel: 6123263284

Fax: 6122933841

Bioworld technology, co. Ltd.

Add: No 9, weidi road Qixia District Nanjing, 210046,
P. R. China.

Email: info@biogot.com

Tel: 0086-025-68037686

Fax: 0086-025-68035151