

CBX6 (K18) polyclonal antibody

Catalog: BS1904

Host: Rabbit

Reactivity: Human, Mouse, Rat

BackGround:

Polycomb group (PcG) proteins form multiprotein complexes that regulate expression patterns of developmental and cell proliferation genes. CBX6 (chromobox protein homolog 6) is a 412 amino acid protein that is a component of the chromatin-associated PcG complex. Through interaction with PcG, CBX6 modifies chromatin and maintains the transcriptionally repressive state of genes. Members of the chromobox domain protein family are characterized by the presence of a 37 amino acid chromobox (CHR) domain (Chromatin Organization Modifier) domain. This domain plays a mechanistic role in targeting chromodomain proteins to specific regions of the nucleus.

Product:

1 mg/ml in Phosphate buffered saline (PBS) with 0.05% sodium azide, approx. pH 7.2.

Molecular Weight:

~ 44 kDa

Swiss-Prot:

O95503

Purification&Purity:

The antibody was affinity-purified from rabbit antiserum by affinity-chromatography using epitope-specific immunogen and the purity is > 95% (by SDS-PAGE).

Applications:

WB: 1:500~1:1000

IHC: 1:50~1:200

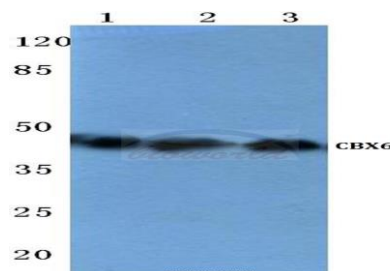
Storage&Stability:

Store at 4 °C short term. Aliquot and store at -20 °C long term. Avoid freeze-thaw cycles.

Specificity:

CBX6 (K18) polyclonal antibody detects endogenous levels of CBX6 protein.

DATA:

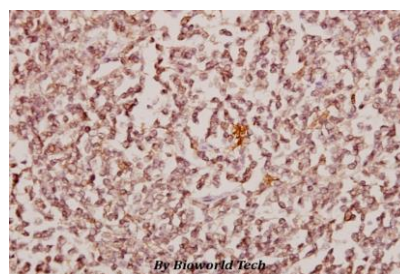


Western blot (WB) analysis of CBX6 (K18) polyclonal antibody at 1:500 dilution

Lane1:Hela cell lysate

Lane2:Raw264.7 cell lysate

Lane3:H9C2 cell lysate



Immunohistochemistry (IHC) analyzes of CBX6 (K18) pAb in paraffin-embedded human tonsil carcinoma tissue at 1:50.

Note:

For research use only, not for use in diagnostic procedure.

Bioworld Technology, Inc.

Add: 1660 South Highway 100, Suite 500 St. Louis Park, MN 55416, USA.

Email: info@bioworld.com

Tel: 6123263284

Fax: 6122933841

Bioworld technology, co. Ltd.

Add: No 9, weidi road Qixia District Nanjing, 210046, P. R. China.

Email: info@biogot.com

Tel: 0086-025-68037686

Fax: 0086-025-68035151