

MRE11 (L260) polyclonal antibody

Catalog: BS1852

Host: Rabbit

Reactivity: Human, Mouse, Rat

BackGround:

DNA double-strand breaks are generated by ionizing radiation and endogenously produced radicals, and they often are repaired through the RAD52 homologous recombination pathway. The RAD52 family includes RAD51, RAD52, RAD54, RAD54B and MRE11 genes. Rad51 and Rad52 proteins perform the key steps in homologous recombination (HR), including the search for DNA homology and strand exchange, through similar mechanisms. Mre11 functions in both non-homologous end joining, and meiotic HR, and it is essential in mitosis for chromosome maintenance. Rad54 belongs to the SWI2/SNF2 subfamily of ATPases, which includes the DNA helicases involved in replication, recombination, and repair, as it contains seven amino acid sequence motifs that are largely conserved. Rad54 ATPase activity is dependent on double-stranded (ds) DNA, and the ATPase activity of Rad54 is not absolutely required for its DNA repair function, suggesting that these activities occur at distinct regions of the molecule. RAD54B is significantly homologous to the RAD54 recombination gene. Expression of RAD54B is highest in testis and spleen, which are active in both meiotic and mitotic recombination..

Product:

1 mg/ml in Phosphate buffered saline (PBS) with 0.05% sodium azide, approx. pH 7.2.

Molecular Weight:

~ 80, 89 kDa

Swiss-Prot:

P49959

Purification&Purity:

The antibody was affinity-purified from rabbit antiserum by affinity-chromatography using epitope-specific immunogen and the purity is > 95% (by SDS-PAGE).

Applications:

WB: 1:500~1:1000

IHC: 1:50~1:200

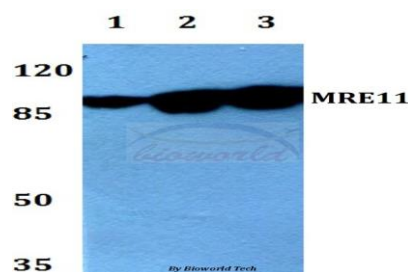
Storage&Stability:

Store at 4 °C short term. Aliquot and store at -20 °C long term. Avoid freeze-thaw cycles.

Specificity:

MRE11 (L260) polyclonal antibody detects endogenous levels of MRE11 protein

DATA:

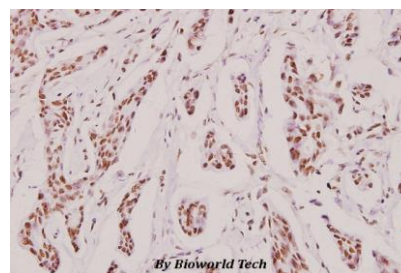


Western blot (WB) analysis of MRE11 (L260) polyclonal antibody at 1:500 dilution

Lane1:HEK293T whole cell lysate

Lane2:A549 whole cell lysate

Lane3:H9C2 whole cell lysate



Immunohistochemistry (IHC) analyzes of MRE11 (L260) pAb in paraffin-embedded human breast carcinoma tissue at 1:100.

Note:

For research use only, not for use in diagnostic procedure.

Bioworld Technology, Inc.

Add: 1660 South Highway 100, Suite 500 St. Louis Park, MN 55416, USA.

Email: info@bioworld.com

Tel: 6123263284

Fax: 6122933841

Bioworld technology, co. Ltd.

Add: No 9, weidi road Qixia District Nanjing, 210046, P. R. China.

Email: info@biogot.com

Tel: 0086-025-68037686

Fax: 0086-025-68035151



PRODUCT DATA SHEET

Bioworld Technology, Inc.

Bioworld Technology, Inc.

Add: 1660 South Highway 100, Suite 500 St. Louis Park,
MN 55416, USA.

Email: info@bioworld.com

Tel: 6123263284

Fax: 6122933841

Bioworld technology, co. Ltd.

Add: No 9, weidi road Qixia District Nanjing, 210046,
P. R. China.

Email: info@biogot.com

Tel: 0086-025-68037686

Fax: 0086-025-68035151