

## Cytokeratin 18 (S48) polyclonal antibody

Catalog: BS1833

Host: Rabbit

Reactivity: Human

### BackGround:

Cytokeratin 18 encodes the type I intermediate filament chain keratin 18. Keratin 18, together with its filament partner keratin 8, are perhaps the most commonly found members of the intermediate filament gene family. They are expressed in single layer epithelial tissues of the body. Mutations in this gene have been linked to cryptogenic cirrhosis. Two transcript variants encoding the same protein have been found for this gene. Involved in the uptake of thrombin-antithrombin complexes by hepatic cells By similarity. When phosphorylated, plays a role in filament reorganization. Involved in the delivery of mutated CFTR to the plasma membrane. Together with KRT8, is involved in interleukin-6 (IL-6)-mediated barrier protection.

### Product:

1 mg/ml in Phosphate buffered saline (PBS) with 0.05% sodium azide, approx. pH 7.2.

### Molecular Weight:

~ 46 kDa

### Swiss-Prot:

P05783

### Purification&Purity:

The antibody was affinity-purified from rabbit antiserum by affinity-chromatography using epitope-specific immunogen and the purity is > 95% (by SDS-PAGE).

### Applications:

WB: 1:500~1:1000

IHC: 1:50~1:200

IF: 1:50~1:200

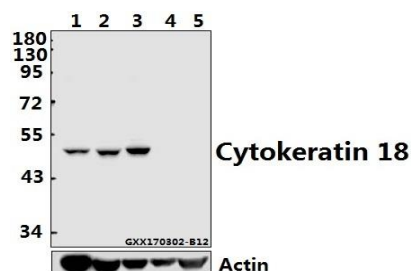
### Storage&Stability:

Store at 4 °C short term. Aliquot and store at -20 °C long term. Avoid freeze-thaw cycles.

### Specificity:

Cytokeratin 18 (S48) polyclonal antibody detects endogenous levels of Cytokeratin 18 protein.

### DATA:



Western blot (WB) analysis of Cytokeratin 18 (S48) polyclonal antibody at 1:500 dilution

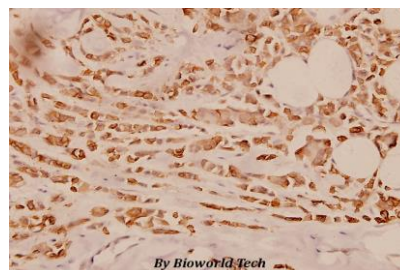
Lane1:HepG2 whole cell lysate(40ug)

Lane2:L02 whole cell lysate(40ug)

Lane3:A549 whole cell lysate(40ug)

Lane4:PC12 whole cell lysate(40ug)

Lane5:MEF whole cell lysate(40ug)



Immunohistochemistry (IHC) analyzes of Cytokeratin 18 (S48) pAb in paraffin-embedded human breast carcinoma tissue at 1:100.

### Note:

For research use only, not for use in diagnostic procedure.

### Bioworld Technology, Inc.

Add: 1660 South Highway 100, Suite 500 St. Louis Park, MN 55416, USA.

Email: [info@bioworld.com](mailto:info@bioworld.com)

Tel: 6123263284

Fax: 6122933841

### Bioworld technology, co. Ltd.

Add: No 9, weidi road Qixia District Nanjing, 210046, P. R. China.

Email: [info@biogot.com](mailto:info@biogot.com)

Tel: 0086-025-68037686

Fax: 0086-025-68035151