

## Cystatin A (G84) polyclonal antibody

Catalog: BS1695

Host: Rabbit

Reactivity: Human, Mouse, Rat

### BackGround:

Cystatin A (also designated STF1, STFA, stefin A or cystatin AS) and cystatin B (also designated PME, CST6, STFB, CPI-B, stefin B and liver thiol proteinase inhibitor) are thiol protease inhibitors that form complexes with papain and the cathepsins B, H and L. Cystatin A, a cytoplasmic protein, is one of the precursor proteins of the cornified cell envelope in keratinocytes and plays a role in epidermal development and maintenance. Cystatin B protects against intracellular proteases leaking out of lysosomes and is primarily expressed in heart, liver and kidney.

### Product:

1 mg/ml in Phosphate buffered saline (PBS) with 0.05% sodium azide, approx. pH 7.2.

### Molecular Weight:

~ 11 kDa

### Swiss-Prot:

P01040

### Purification&Purity:

The antibody was affinity-purified from rabbit antiserum by affinity-chromatography using epitope-specific immunogen and the purity is > 95% (by SDS-PAGE).

### Applications:

WB: 1:500~1:1000

IHC: 1:50~1:200

IF: 1:50~1:200

### Storage&Stability:

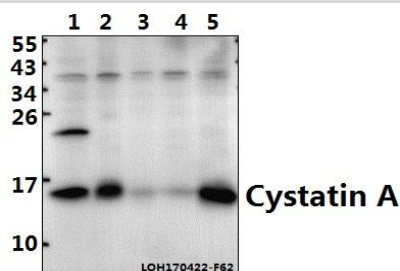
Store at 4 °C short term. Aliquot and store at -20 °C long term. Avoid freeze-thaw cycles.

### Specificity:

Cystatin A (G84) polyclonal antibody detects endogenous

levels of Cystatin A protein.

### DATA:



Western blot (WB) analysis of Cystatin A (G84) polyclonal antibody at 1:500 dilution

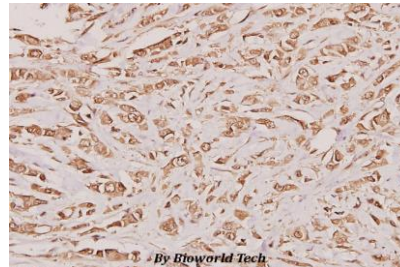
Lane1:PC12 whole cell lysate(40ug)

Lane2:CT-26 whole cell lysate(40ug)

Lane3:COS-7 whole cell lysate(40ug)

Lane4:HEK293T whole cell lysate(40ug)

Lane5:Beas-2B whole cell lysate(40ug)



Immunohistochemistry (IHC) analyzes of Cystatin A (G84) pAb in paraffin-embedded human breast carcinoma tissue at 1:100.

### Note:

For research use only, not for use in diagnostic procedure.

### Bioworld Technology, Inc.

Add: 1660 South Highway 100, Suite 500 St. Louis Park, MN 55416, USA.

Email: [info@bioworld.com](mailto:info@bioworld.com)

Tel: 6123263284

Fax: 6122933841

### Bioworld technology, co. Ltd.

Add: No 9, weidi road Qixia District Nanjing, 210046, P. R. China.

Email: [info@biogot.com](mailto:info@biogot.com)

Tel: 0086-025-68037686

Fax: 0086-025-68035151