

## B-Myb (G573) polyclonal antibody

Catalog: BS1614

Host: Rabbit

Reactivity: Human, Mouse

### BackGround:

c-Myb is the cellular homolog of the leukemogenic avian retroviral protein v-Myc. c-Myb is expressed predominantly in immature and rapidly dividing hematopoietic cells, and cellular levels of c-Myb substantially decreases as cells reach terminal differentiation. B-Myb is expressed in a wide variety of proliferating cells, with levels accumulating during the G1 to S phase transition. A-Myb is expressed at specific times in reproductive tissues, some neural cells, and a subset of normal and neoplastic B lymphocytes.

### Product:

Rabbit IgG, 1mg/ml in PBS with 0.02% sodium azide, 50% glycerol, pH7.2

### Molecular Weight:

~ 78 kDa

### Swiss-Prot:

P10244

### Purification&Purity:

The antibody was affinity-purified from rabbit antiserum by affinity-chromatography using epitope-specific immunogen and the purity is > 95% (by SDS-PAGE).

### Applications:

WB: 1:500~1:1000

IF: 1:50~1:200

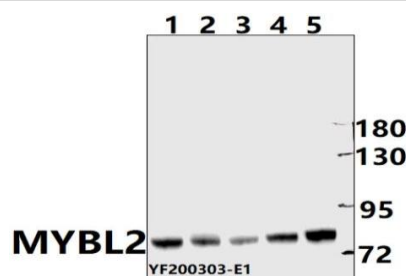
### Storage&Stability:

Store at 4 °C short term. Aliquot and store at -20 °C long term. Avoid freeze-thaw cycles.

### Specificity:

B-Myb (G573/577) polyclonal antibody detects endogenous levels of B-Myb protein.

### DATA:



Western blot (WB) analysis of MYBL2 pAb at 1:1000 dilution

Lane1:Panc1 whole cell lysate(40ug)

Lane2:MEF whole cell lysate(40ug)

Lane3:SHSY5Y whole cell lysate(40ug)

Lane4:Jurkat whole cell lysate(40ug)

Lane5:K562 whole cell lysate (40ug)

### Note:

For research use only, not for use in diagnostic procedure.

### Bioworld Technology, Inc.

Add: 1660 South Highway 100, Suite 500 St. Louis Park, MN 55416, USA.

Email: [info@bioworld.com](mailto:info@bioworld.com)

Tel: 6123263284

Fax: 6122933841

### Bioworld technology, co. Ltd.

Add: No 9, weidi road Qixia District Nanjing, 210046, P. R. China.

Email: [info@biogot.com](mailto:info@biogot.com)

Tel: 0086-025-68037686

Fax: 0086-025-68035151