

Casein Kinase II β (S205) polyclonal antibody

Catalog: BS1529

Host: Rabbit

Reactivity: Human, Mouse, Rat

BackGround:

Casein kinase I (also designated CKI) and casein kinase II (also designated CKII) compose a family of serine/threonine protein kinases which are present in all eukaryotes examined to date. CKI family members, which include CKI α , γ , ϵ and δ , have been implicated in the control of cytoplasmic and nuclear processes, including DNA replication and repair. CKII is usually expressed as a tetrameric complex consisting of either an $\alpha 2\beta 2$ or an $\alpha\alpha'\beta 2$ structure. The α catalytic subunit is stimulated by the β regulatory subunit, which undergoes autophosphorylation. CKII activity is high in the cytosol and nucleus of proliferating and differentiating cells. CKII is known to phosphorylate more than 100 different substrates including nuclear oncoproteins, transcription factors and enzymes involved in DNA metabolism.

Product:

1 mg/ml in Phosphate buffered saline (PBS) with 0.05% sodium azide, approx. pH 7.2.

Molecular Weight:

~ 25 kDa

Swiss-Prot:

P67870

Purification&Purity:

The antibody was affinity-purified from rabbit antiserum by affinity-chromatography using epitope-specific immunogen and the purity is > 95% (by SDS-PAGE).

Applications:

WB: 1:500~1:1000

IHC: 1:50~1:200

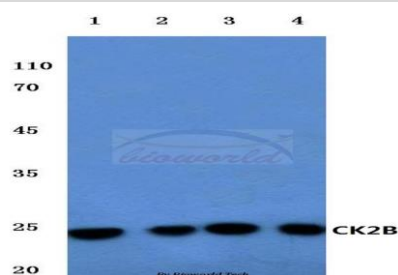
Storage&Stability:

Store at 4 °C short term. Aliquot and store at -20 °C long term. Avoid freeze-thaw cycles.

Specificity:

CK2- β (S205) polyclonal antibody detects endogenous levels of CK2- β protein.

DATA:



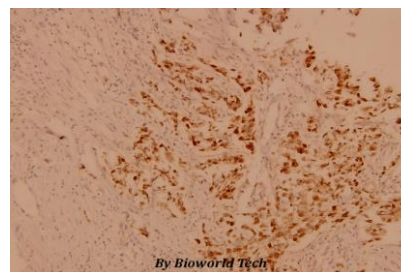
Western blot (WB) analysis of Casein Kinase II β (S205) polyclonal antibody at 1:500 dilution

Lane1:Jukat cell lysate

Lane2:Hela cell lysate

Lane3:Mouse brain tissue lysate

Lane4:Rat brain tissue lysate



Immunohistochemistry (IHC) analyzes of Casein Kinase II β (S205) pAb in paraffin-embedded human breast carcinoma tissue at 1:100.

Note:

For research use only, not for use in diagnostic procedure.

Bioworld Technology, Inc.

Add: 1660 South Highway 100, Suite 500 St. Louis Park, MN 55416, USA.

Email: info@bioworld.com

Tel: 6123263284

Fax: 6122933841

Bioworld technology, co. Ltd.

Add: No 9, weidi road Qixia District Nanjing, 210046, P. R. China.

Email: info@biogot.com

Tel: 0086-025-68037686

Fax: 0086-025-68035151