

**Cdc25B (K349) polyclonal antibody**

Catalog: BS1523

Host: Rabbit

Reactivity: Human

**BackGround:**

The activity of cyclin dependent kinases in cell cycle is regulated by the phosphorylation status, which is controlled by the antagonistic action of wee 1 kinase and Cdc25 phosphatases. Three Cdc25 genes are present in human cells: Cdc25A, Cdc25B and Cdc25C. Cdc25A and Cdc25B are expressed throughout the cell cycle, with peak expression in G1 for Cdc25A and in both G1 S phase and G2 for Cdc25B. Cdc25C is mainly expressed in G2 phase.

**Product:**

1 mg/ml in Phosphate buffered saline (PBS) with 0.05% sodium azide, approx. pH 7.2.

**Molecular Weight:**

~ 65 kDa

**Swiss-Prot:**

P30305

**Purification&Purity:**

The antibody was affinity-purified from rabbit antiserum by affinity-chromatography using epitope-specific immunogen and the purity is > 95% (by SDS-PAGE).

**Applications:**

IHC: 1:50~1:200

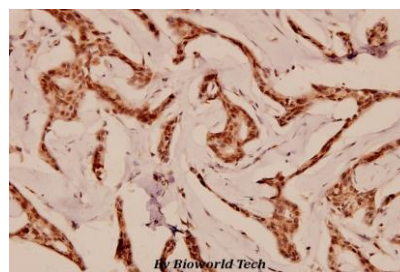
IF: 1:50~1:200

**Storage&Stability:**

Store at 4 °C short term. Aliquot and store at -20 °C long term. Avoid freeze-thaw cycles.

**Specificity:**

CDC25B (K349) polyclonal antibody detects endogenous levels of CDC25B protein.

**DATA:**

Immunohistochemistry (IHC) analyzes of Cdc25B (K349) pAb in paraffin-embedded human breast carcinoma tissue at 1:100.

**Note:**

For research use only, not for use in diagnostic procedure.

**Bioworld Technology, Inc.**

Add: 1660 South Highway 100, Suite 500 St. Louis Park, MN 55416, USA.

Email: [info@bioworld.com](mailto:info@bioworld.com)

Tel: 6123263284

Fax: 6122933841

**Bioworld technology, co. Ltd.**

Add: No 9, weidi road Qixia District Nanjing, 210046, P. R. China.

Email: [info@biogot.com](mailto:info@biogot.com)

Tel: 0086-025-68037686

Fax: 0086-025-68035151